



# Steering Columns System

Injection plastic covers

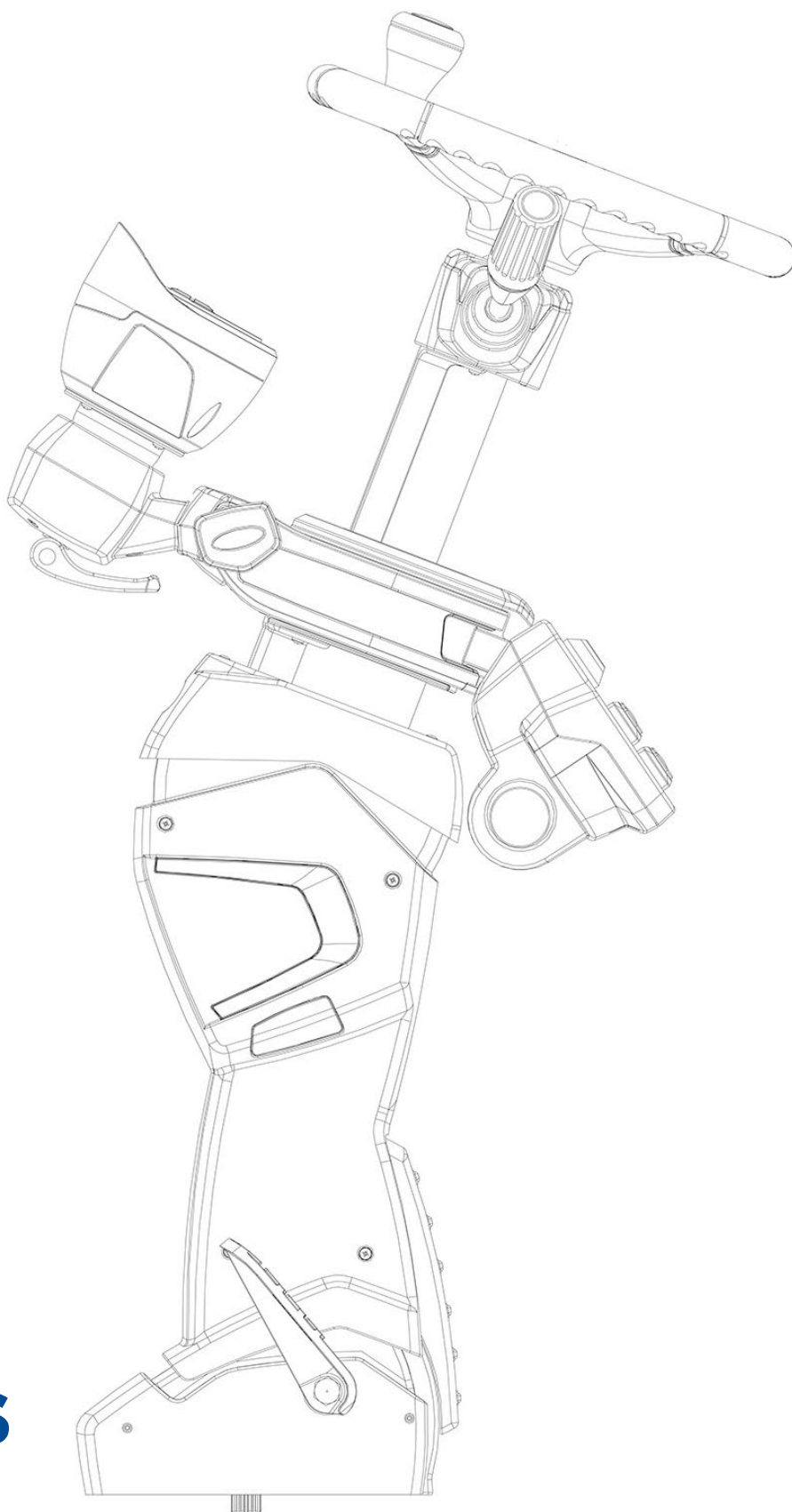
EU SAFETY & QUALITY STANDARD  
CUSTOMIZED ASSEMBLY  
ITALIAN DESIGN  
OPERATOR COMFORT

**ama**  
IMEL Division



# Steering Columns

Catalogue





### **DYNAMICA**

pag. 6-7



### **CLVIEW**

pag. 8



### **CLVIEW** Short and Medium

pag. 9



### **CL501**

pag. 10



### **CL501**

Short

pag. 11



### **CL701**

pag. 12



### **CL701**

Short

pag. 13



### **CL2100**

pag. 14



### **CL2100**

Short and Medium

pag. 15



### **CL2300-I**

pag. 16



### **CL2300-I MCD**

pag. 17



### **CL2350**

pag. 18



### **CL4000**

pag. 19



### **CL5000 J**

pag. 20



### **CL5000 J**

Short

pag. 21



### **CL6000**

pag. 22





---

**CL6000**

**Short**  
pag. 23



---

**CL7000**

pag. 24



---

**CL7000**

**Short**  
pag. 25



---

**SERIE 6**

pag. 28



---

**SERIE 9**

pag. 28



---

**SERIE 10**

pag. 29



---

**SERIE 11**

pag. 29



---

**SERIE 12**

pag. 30



---

**SERIE 18**

pag. 30



---

**Knob**

pag. 31



---

**J-Cluster**

pag. 31



---

**NIMBUS**

pag. 31



---

**D100TFT**

pag. 32



---

**SMARTVIEW**

pag. 32



---

**SLIMTITAN**

pag. 32



---

**STEERINGVIEW**

pag. 32



---

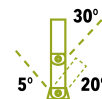
**KEYCAN**

pag. 32

# DYNAMICA

MPR

metal pillar



tilt



75 mm

■ RAL 9005 ■ RAL 7015

## STANDARD FEATURES

Injection plastic covers: RAL7015 or RAL9005

Panel with canbus keypad with 5 pushbuttons: hazard function and 4 functions switches customizable

Accommodation stalk switches on LH and/or RH side

CANBUS plug and play

Wiring harness (standard or customized)

Customizable logo with or without backlight

Option solar light sensor for automatic lighting

## DUAL TILT ADJUSTMENT

Upper pivot, located at mid column lenght, operated push lever on left side ( $30^\circ$  toward operator)

Lower pivot, located at the base of the column, operated by a dedicated pedal ( $5^\circ$  toward windshield and  $20^\circ$  toward operator)

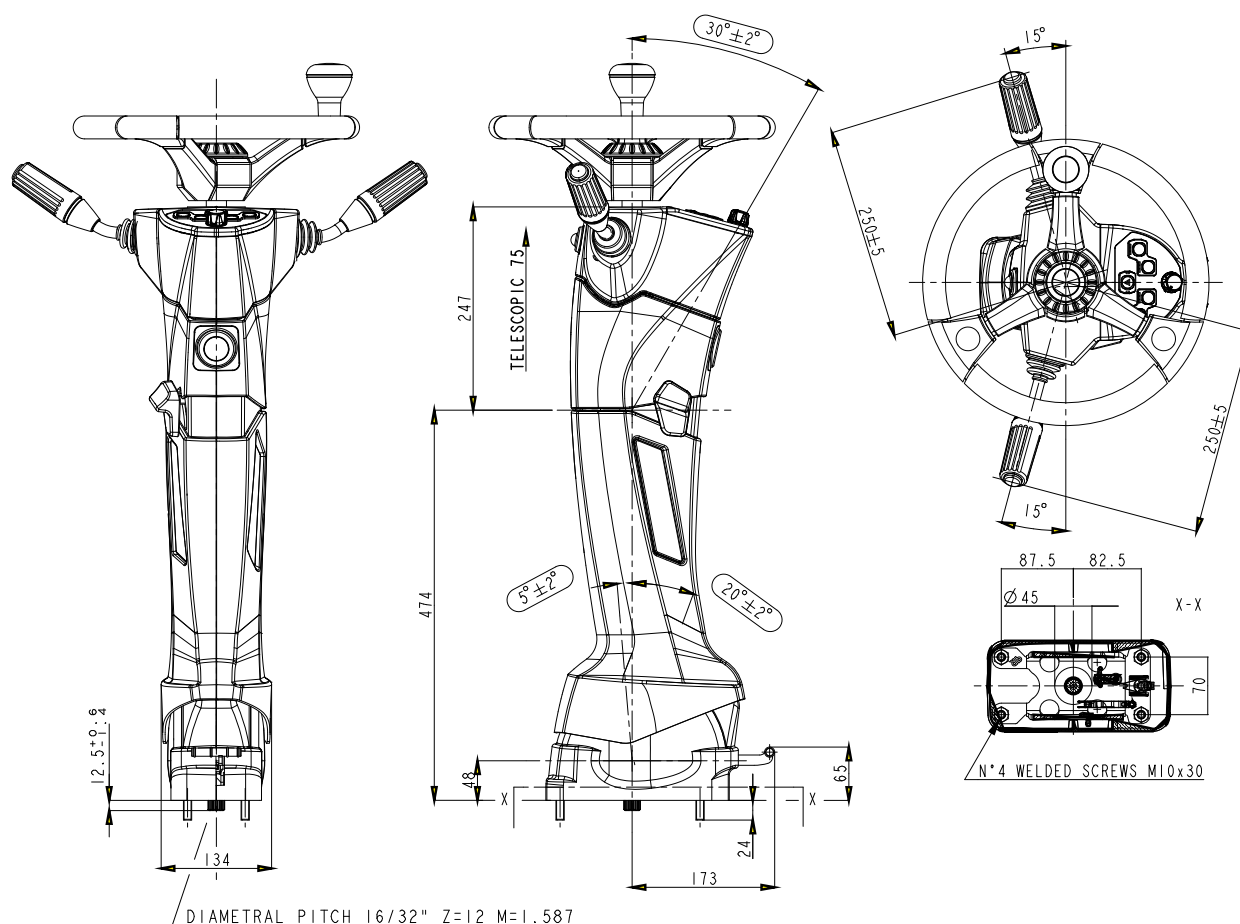
Possibility to choice pedal position: left, central or right side

Both tilt adjustment are gas strut assisted

## TELESCOPIC ADJUSTMENT

Located onto upper section (75 mm)

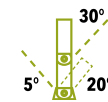
Operated by center cap on steering wheel



# DYNAMICA

MPR

metal pillar



tilt



75 mm



## FRONT PANEL

Small control panel with serial communication (Can Bus) where 5 control buttons are integrated, 4 of which can be configured as a function symbol, LED color and for software functionality.

Aesthetic design of the buttons allows them to be used inside the cab with Keycan product. (see page 32)



## SOLAR LIGHT SENSOR

Possibility of inserting a sunlight sensor for automatic activation of street lights.



## CUSTOMER LOGO

The side finishes placed in the lower part of the column can be customized with the customer logo and can also be backlit.



## LOWER TILTING PEDAL

On request, the pedal can be positioned on the right side, left or in a central position





**tilt**

**75 mm**



Operated by dedicated pull lever located under-near the steering wheel



# CLVIEW Short and Medium

MPR

metal pillar



tilt



75 mm



RAL 9005

RAL 7015

## STANDARD FEATURES

Injection plastic covers: RAL9005 or RAL7015

Accommodation for ignition switch

Panel with 2 rocker switches and 4 led indicator lights

Accommodation stalk switches on LH and/or RH side

Dedicated steering wheel + Display 7" (page 31)

Wiring harness (standard or customized)

## SINGLE TILT ADJUSTMENT

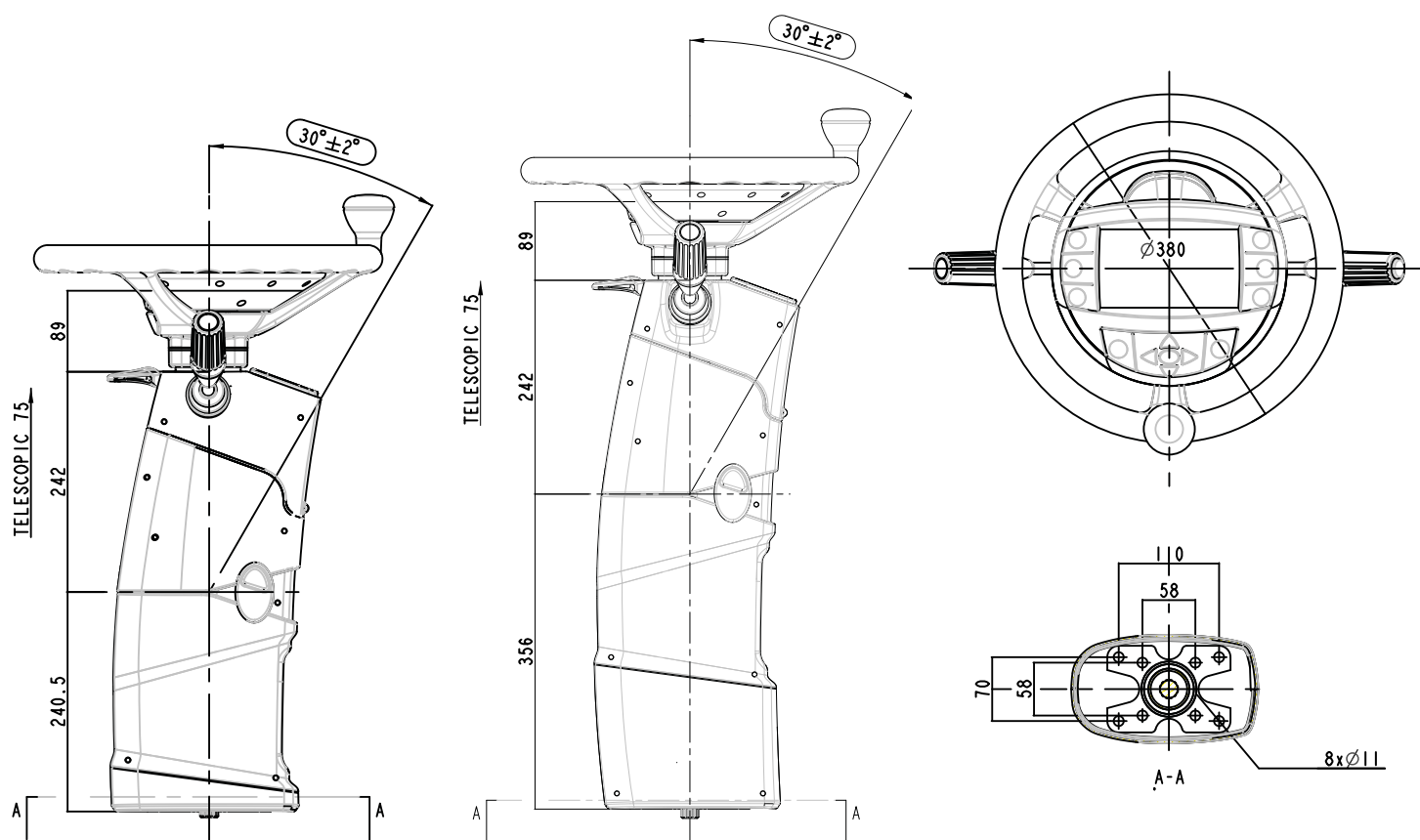
Located at mid column length, operated by push lever on left side (30° toward operator)

Adjustment are gas strut assisted

## TELESCOPIC ADJUSTMENT

Located onto upper section (75 mm)

Operated by dedicated pull lever located under-near the steering wheel





# CL501

BCH

metal pillar



tilt



60 mm

RAL 9005

RAL 7016

## STANDARD FEATURES

Top side thermoformed plastic covers and bottom side injection plastic covers: RAL9005 or RAL7016

Accommodation for ignition switch

Accommodation for Slim Titan display 7" (page 31)

Panel with 6 rocker switches and 1 hazard switch

Accommodation stalk switches on LH and/or RH side

Steering wheel (pages 26, 27, 28, 29)

Wiring harness (standard or customized)

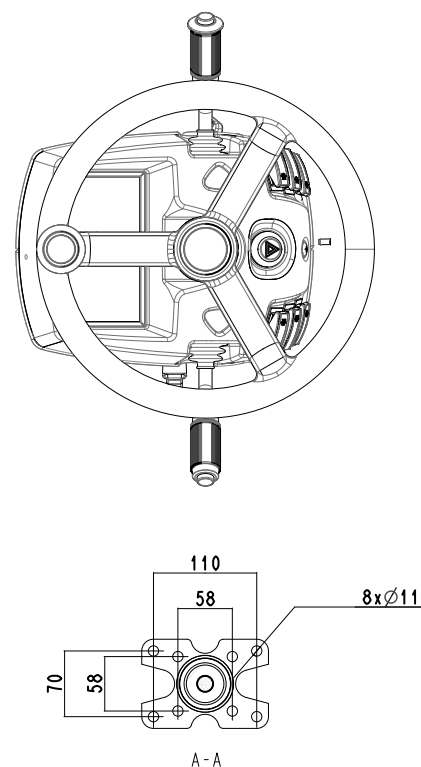
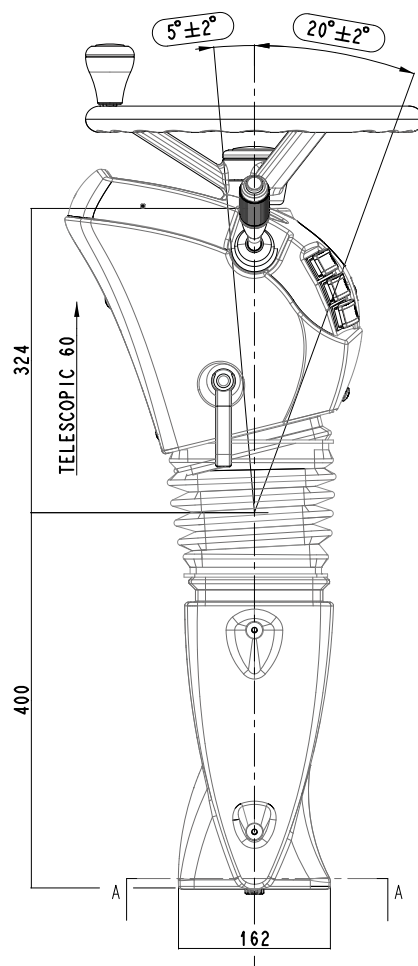
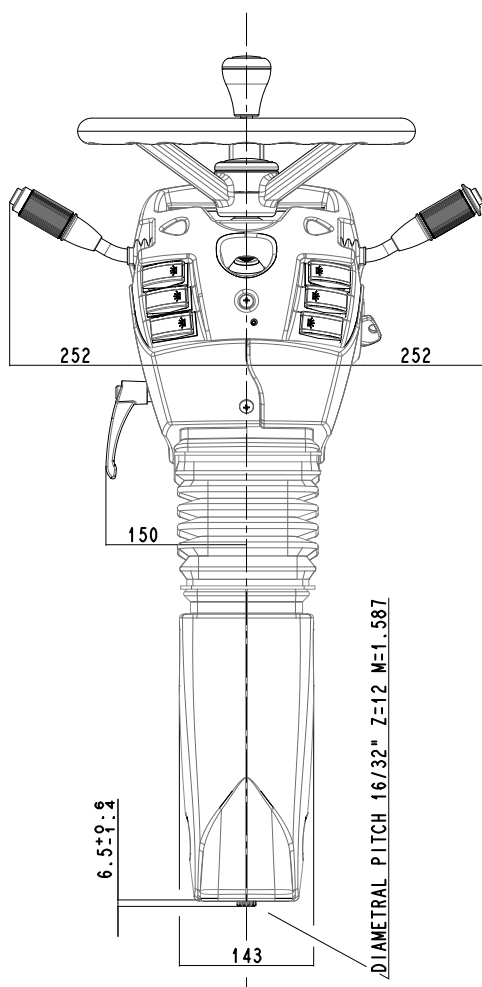
## SINGLE TILT ADJUSTMENT

Upper pivot, located at mid column length, operated by handle lever on left side ( $5^\circ$  toward windshield  $20^\circ$  toward operator)

## TELESCOPIC ADJUSTMENT

Located onto upper section (60 mm)

Operated by handle lever on left side



# CL501 Short

BCH

metal pillar



tilt



60 mm



RAL 9005

RAL 7016

## STANDARD FEATURES

Top side thermoformed plastic covers and bottom side injection plastic covers: RAL9005 or RAL7016

Accommodation for ignition switch

Accommodation for Slim Titan display 7" (page 31)

Panel with 6 rocker switches and 1 hazard switch

Accommodation stalk switches on LH and/or RH side

Steering wheel (pages 26, 27, 28, 29)

Wiring harness (standard or customized)

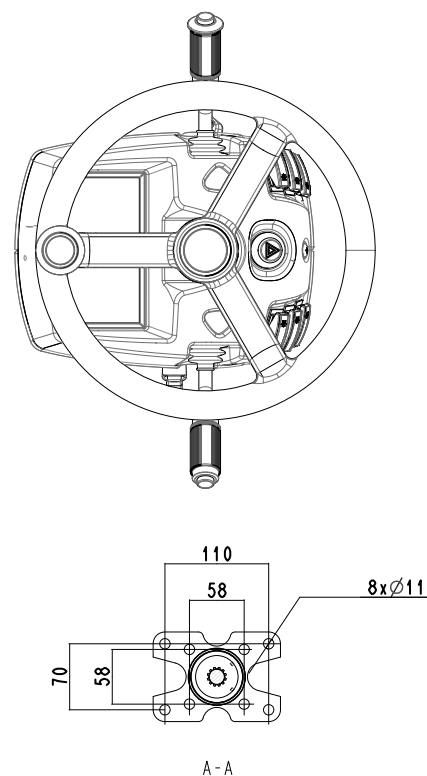
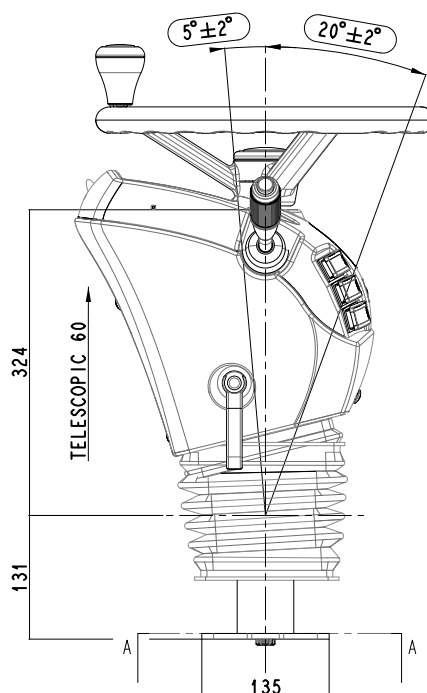
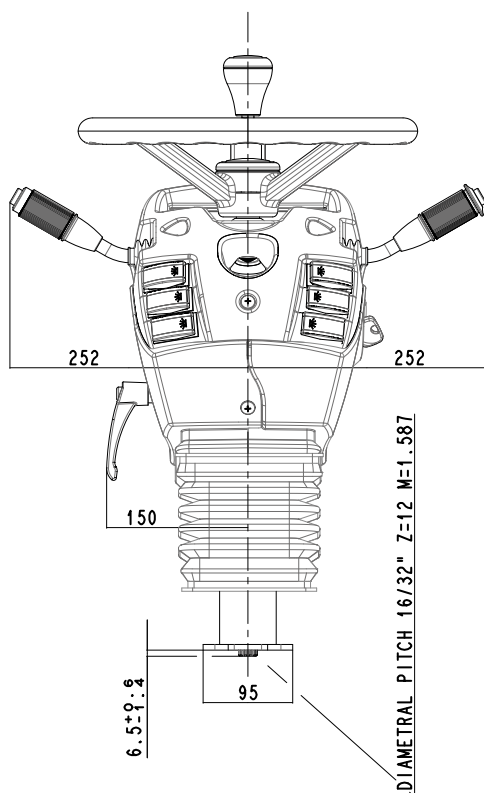
## DUAL TILT ADJUSTMENT

Upper pivot, located at mid column length, operated handle lever on left side (5° toward windshield 20° toward operator)

## TELESCOPIC ADJUSTMENT

Located onto upper section (60 mm)

Operated by handle lever on left side



A - A

# CL701

BCH

metal pillar



tilt



60 mm

RAL 9005

RAL 7016

## STANDARD FEATURES

Injection plastic covers: RAL9005 or RAL7016

Accommodation for ignition switch

Accommodation for emergency stop push button

Panel with 3 rocker switches

Accommodation stalk switches on LH and/or RH side

Steering wheel (pages 26, 27, 28, 29)

Wiring harness (standard or customized)

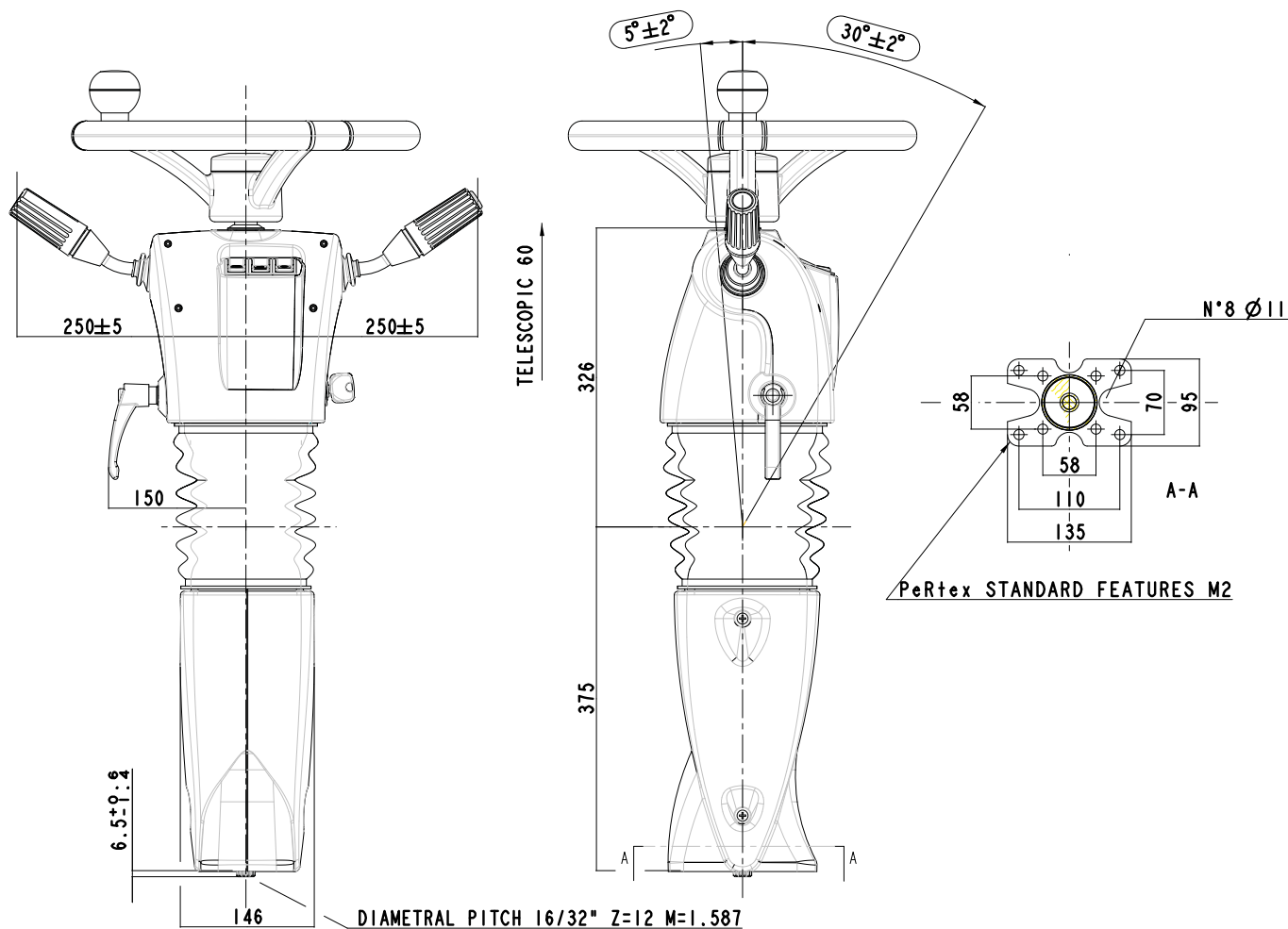
## SINGLE TILT ADJUSTMENT

Upper pivot, located at mid column length, operated by handle lever on left side (5° toward windshield 20° toward operator)

## TELESCOPIC ADJUSTMENT

Located onto upper section (60 mm)

Operated by handle lever on left side





# CL701 Short

BCH

metal pillar



tilt



60 mm



RAL 9005

RAL 7016

## STANDARD FEATURES

Injection plastic covers: RAL9005 or RAL7016

Accommodation for ignition switch

Accommodation for emergency stop push button

Panel with 3 rocker switches

Accommodation stalk switches on LH and/or RH side

Steering wheel (pages 26, 27, 28, 29)

Wiring harness (standard or customized)

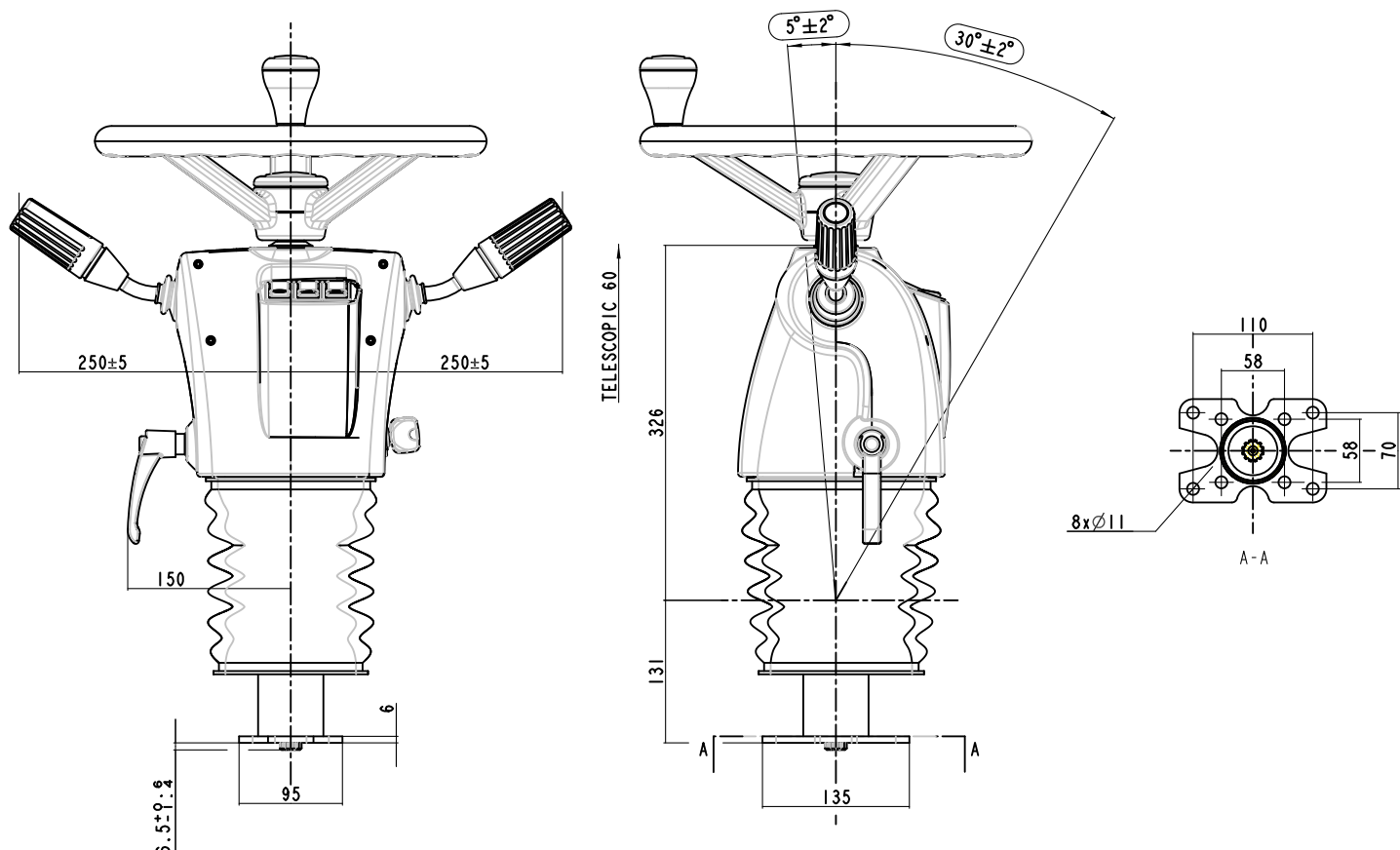
## SINGLE TILT ADJUSTMENT

Operated by handle lever on left side  
(5° toward windshield 30° toward operator)

## TELESCOPIC ADJUSTMENT

Located onto upper section (60 mm)

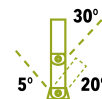
Operated by handle lever on left side



# CL2100

MPR

metal pillar



tilt



75 mm



RAL 9005

RAL 7015

## STANDARD FEATURES

Injection plastic covers: RAL9005 or RAL7015

Accommodation for ignition switch

Panel with 2 rocker switches and 4 led indicator lights

Accommodation stalk switches on LH and/or RH side

Steering wheel (pages 26, 27, 28, 29)

Wiring harness (standard or customized)

## DUAL TILT ADJUSTMENT

Upper pivot, located at mid column length, operated by push lever on left side (30° toward operator)

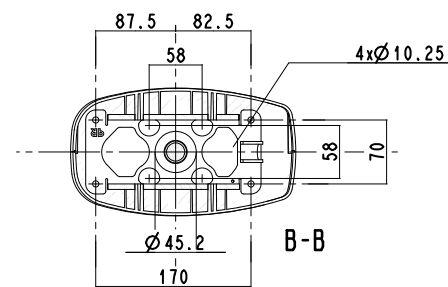
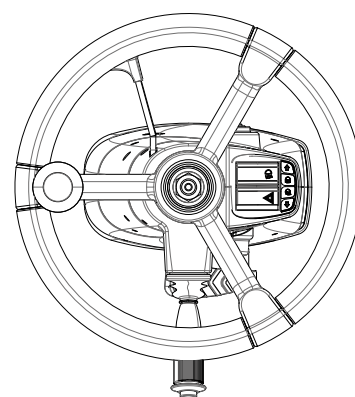
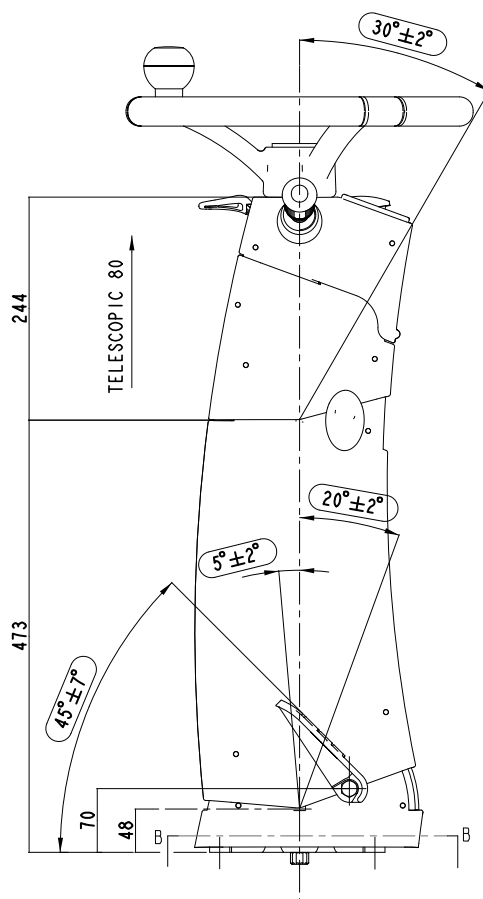
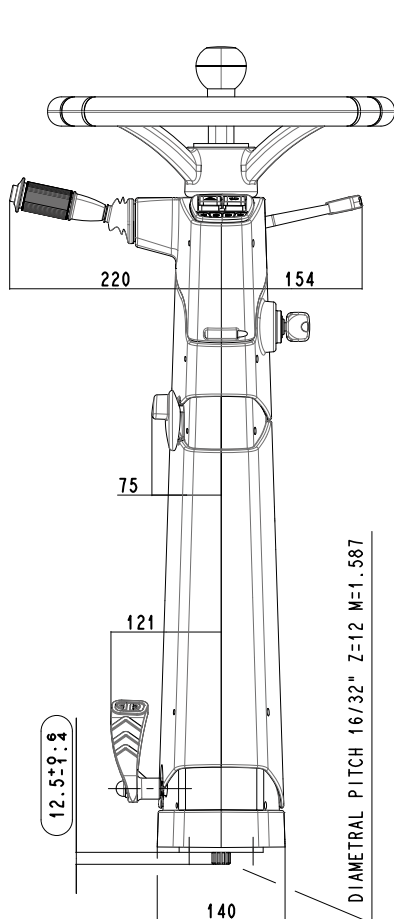
Lower pivot located at the base of the column, operated by a dedicated pedal on left side (5° toward windshield and 20° toward operator)

Both tilt adjustment are gas strut assisted

## TELESCOPIC ADJUSTMENT

Located onto upper section (75 mm)

Operated by dedicated pull lever located under-near the steering wheel



# CL2100 Short and Medium

MPR

metal pillar



tilt



75 mm



RAL 9005

RAL 7015

## STANDARD FEATURES

Injection plastic covers: RAL9005 or RAL7015

Accommodation for ignition switch

Panel with 2 rocker switches and 4 led indicator lights

Accommodation stalk switches on LH and/or RH side

Steering wheel (pages 26, 27, 28, 29)

Wiring harness (standard or customized)

## SINGLE TILT ADJUSTMENT

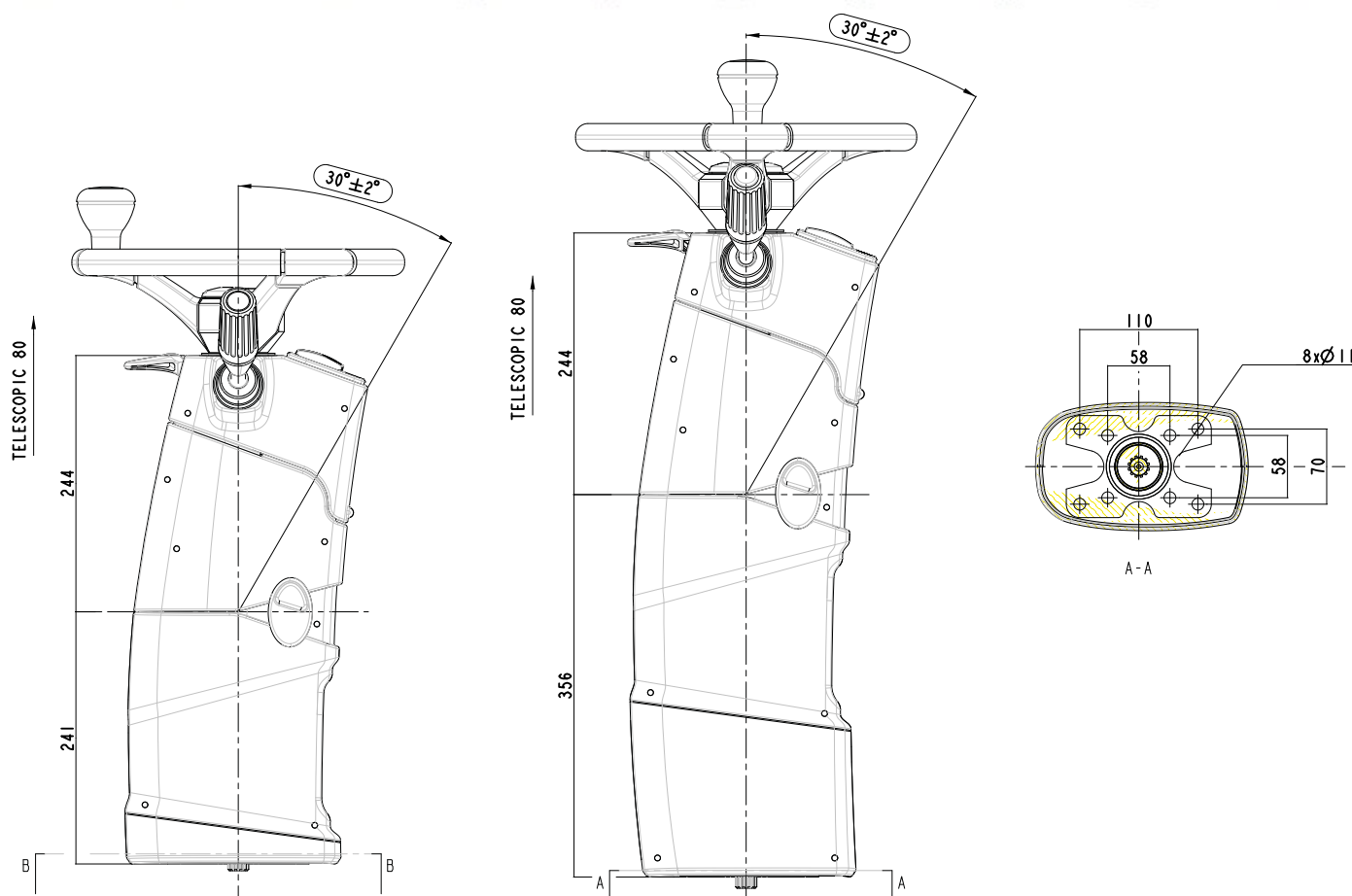
Located at mid column length, operated by push lever on left side (30° toward operator)

Adjustment are gas strut assisted

## TELESCOPIC ADJUSTMENT

Located onto upper section (75 mm)

Operated by dedicated pull lever located under-near the steering wheel



# CL2300-I

CBK

metal pillar



tilt



50 mm



**RAL 9004** **RAL 7016**

## STANDARD FEATURES

Injection plastic covers: RAL9004 or RAL7016

Panel with 1 rocker switch

Accommodation stalk switches on LH side

Steering wheel (pages 26, 27, 28, 29)

Wiring harness (standard or customized)

## SINGLE TILT ADJUSTMENT

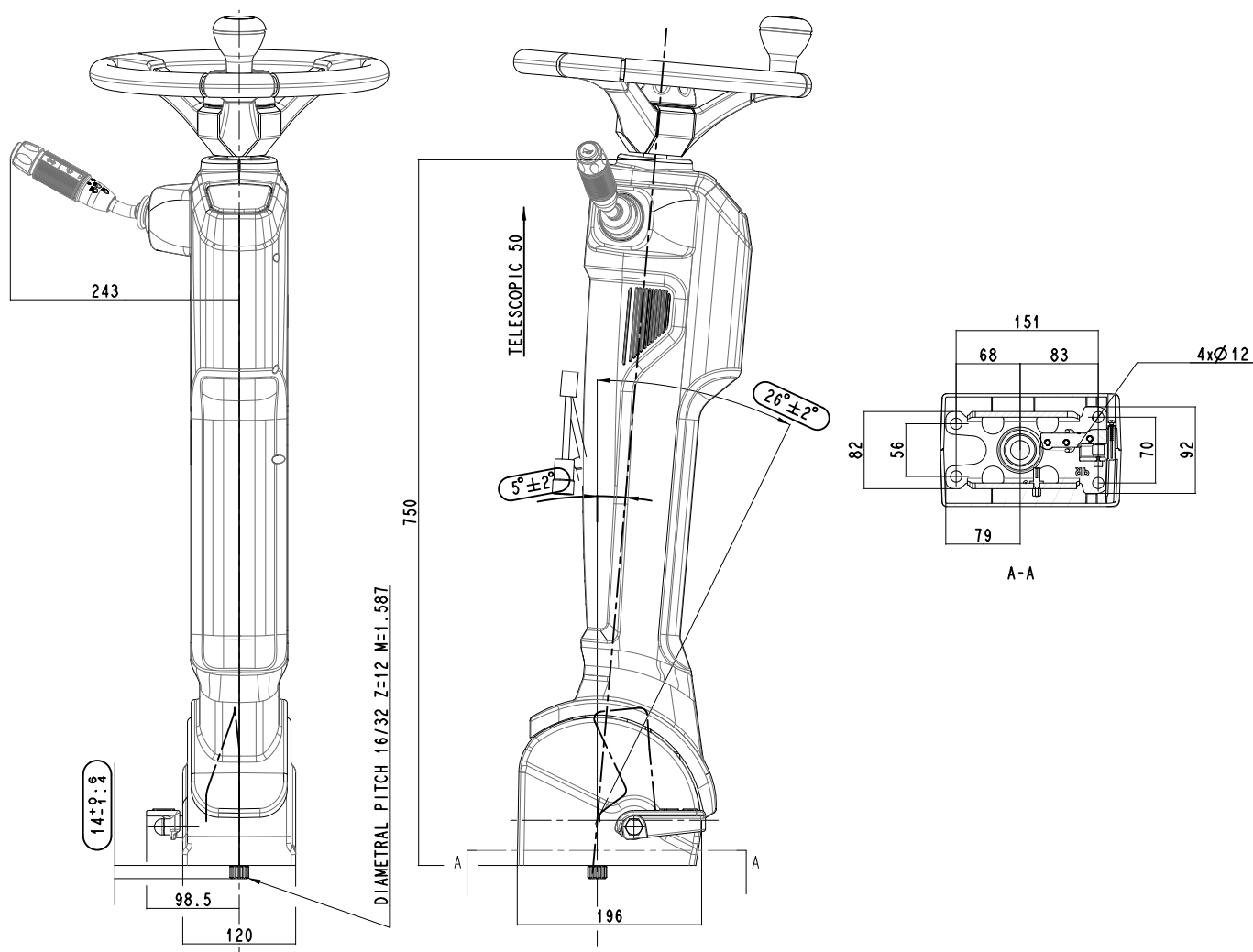
Pivot located at the base of the column, operated by a dedicated pedal on left side ( $5^\circ + 21^\circ$  toward operator)

Tilt adjustment is gas strut assisted

## TELESCOPIC ADJUSTMENT

Located onto upper section (50 mm)

Operated by center cap on steering wheel



# CL2300-I MCD

CBK

metal pillar



tilt



50 mm



**RAL 9004** **RAL 7016**

## STANDARD FEATURES

Injection plastic covers: RAL9004 or RAL7016

Panel with 2 keycan or warning lights module and keycan or Smart-View cluster

Accommodation stalk switches on LH side

Steering wheel (pages 26, 27, 28, 29)

Wiring harness (standard or customized)

## SINGLE TILT ADJUSTMENT

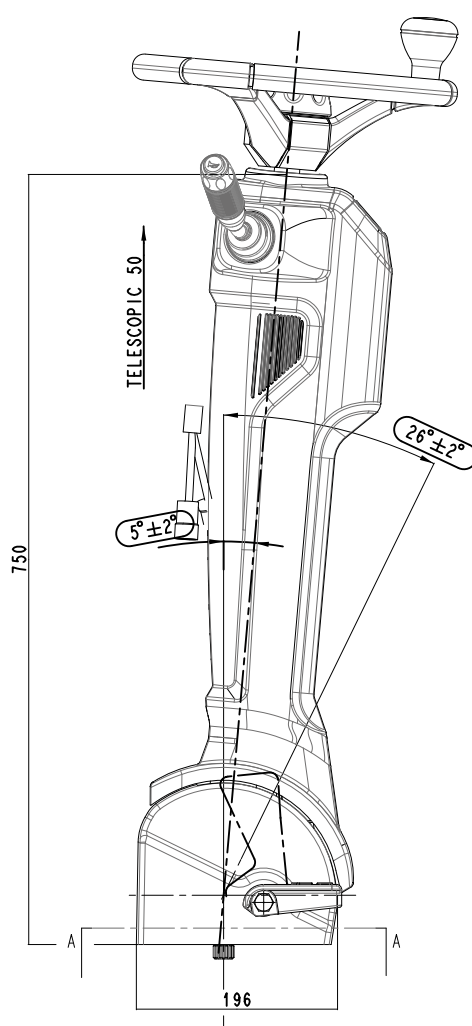
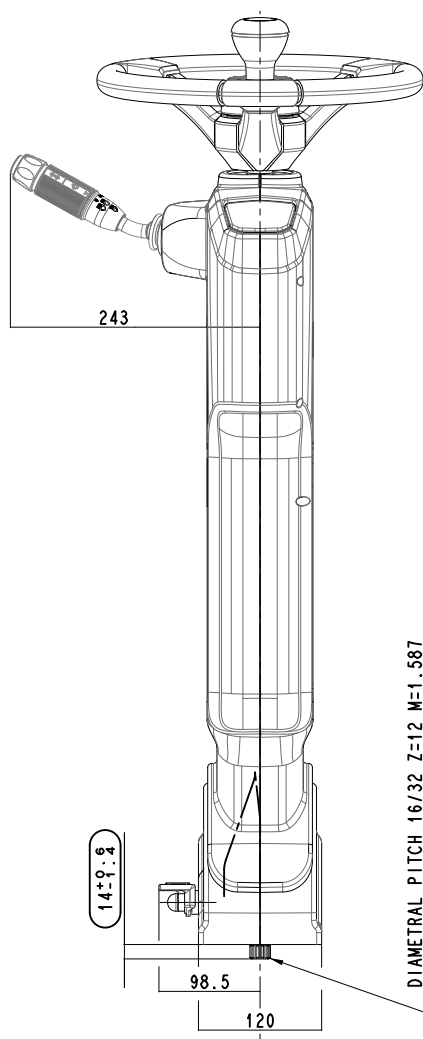
Pivot located at the base of the column, operated by a dedicated pedal on left side ( $5^\circ + 21^\circ$  toward operator)

Tilt adjustment is gas strut assisted

## TELESCOPIC ADJUSTMENT

Located onto upper section (50 mm)

Operated by center cap on steering wheel



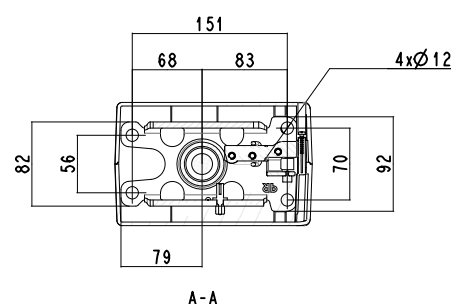
**Keycan + Keycan**



**Warning Lights Module + Keycan**



**Smartview**





# CL2350

CBK

metal pillar



tilt



80 mm



RAL 9005

RAL 7016

## STANDARD FEATURES

Injection plastic covers: RAL9005 or RAL7016

Accommodation stalk switches on LH and/or RH sides

Steering wheel (pages 26, 27, 28, 29)

Wiring harness (standard or customized)

## SINGLE TILT ADJUSTMENT

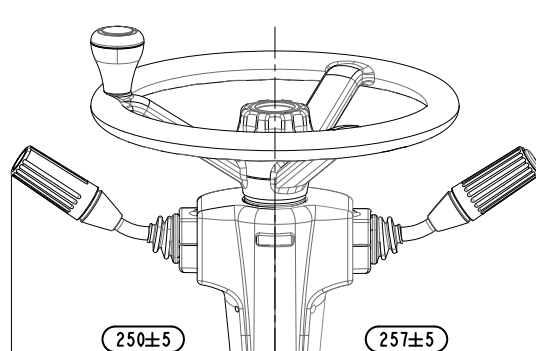
Pivot located at the base of the column, operated by a dedicated pedal in central position (start position 14°, move 5° toward windshield and 10° toward operator)

Adjustment are gas strut assisted

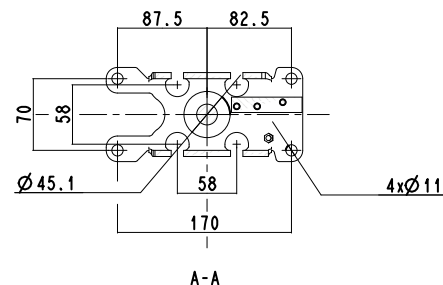
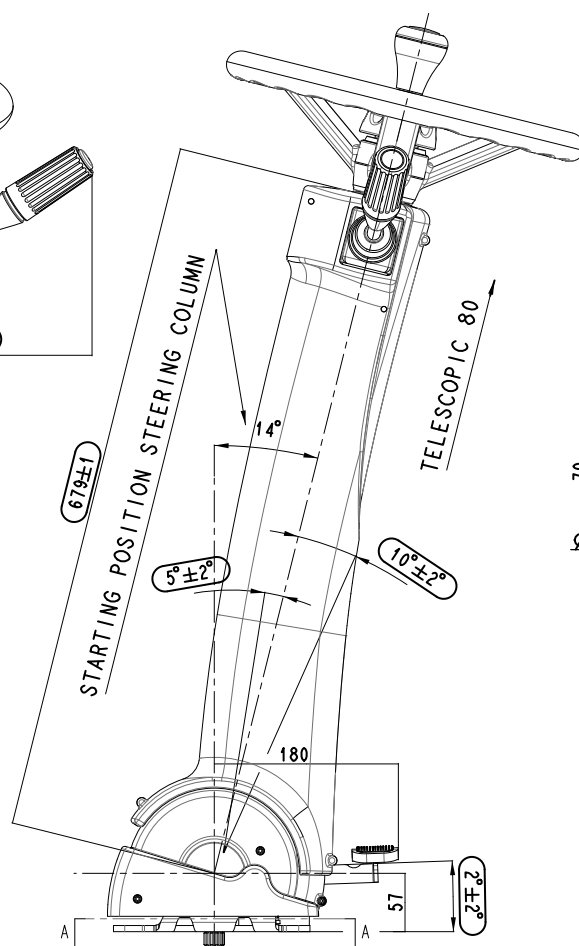
## TELESCOPIC ADJUSTMENT

Located onto upper section (80 mm)

Operated by center cap on steering wheel


 $14 \pm 0.6$ 

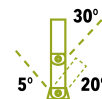
DIAMETRAL PITCH 16/32 Z=12 M=1.587



# CL4000

MPR

metal pillar



tilt



50 mm



RAL 9005

RAL 7016

## STANDARD FEATURES

Injection plastic covers: RAL9005 or RAL7016

Accommodation for ignition switch

Smat-View CanBus Digital Cluster with 2,4" display (page 31)

Accommodation stalk switches on LH and/or RH side

Steering wheel (pages 26, 27, 28, 29)

Wiring harness (standard or customized)

## DUAL TILT ADJUSTMENT

Upper pivot, located at mid column lenght, operated Push button on the top side (30° toward operator)

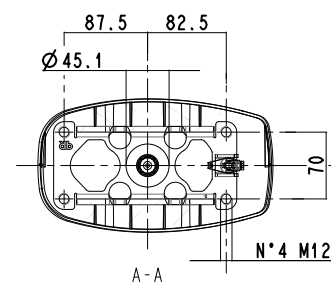
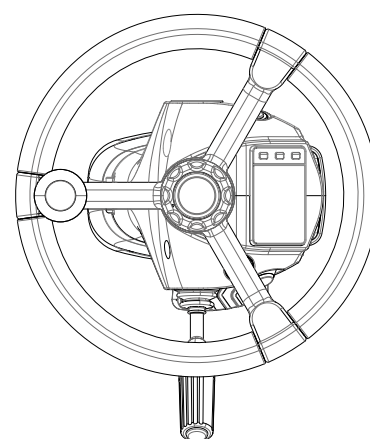
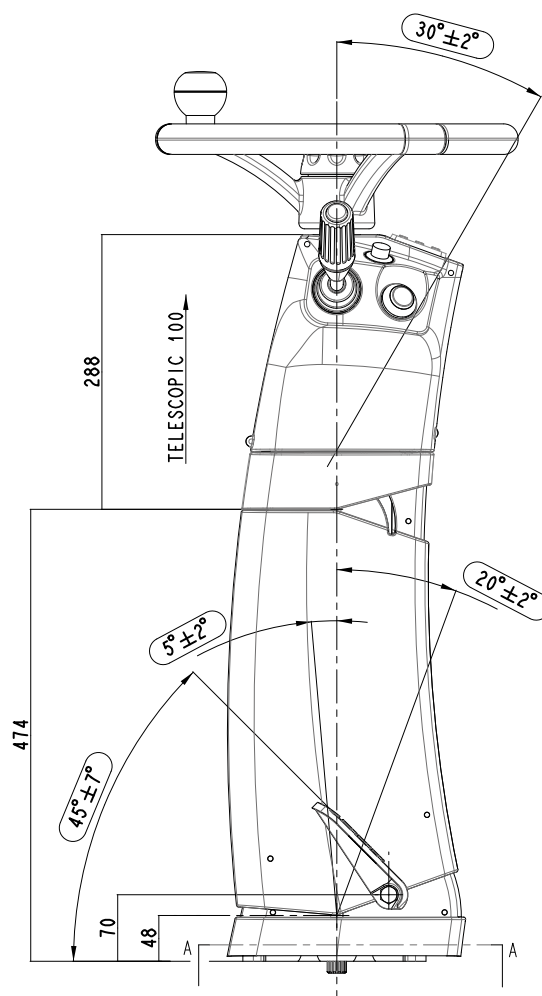
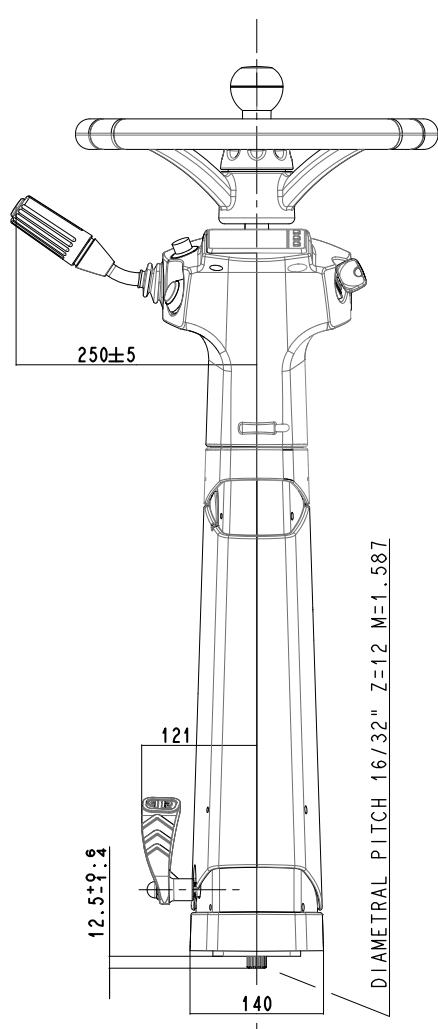
Lower pivot located at the base of the column, operated by a dedicated pedal on left side (5° toward windshield and 20° toward operator)

Both tilt adjustment are gas strut assisted

## TELESCOPIC ADJUSTMENT

Located onto upper section (100 mm)

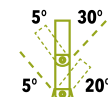
Operated by center cap on steering wheel



# CL5000 J

**BCH**

metal pillar



tilt



60 mm

**RAL 9005**
**RAL 7015**

## STANDARD FEATURES

Injection plastic covers: RAL9005 or RAL7015

Accomodation for ignition switch

Accomodation for J-Cluster or Nimbus (page 30)

Panel with 8 rocker switches

Accomodation stalk switches on LH and/or RH side

Steering wheel (pages 26, 27, 28, 29)

Wiring harness (standard or customized)

## DUAL TILT ADJUSTMENT

Upper pivot, located at mid column lenght, operated by push lever on left side (5° toward windshield 30° toward operator)

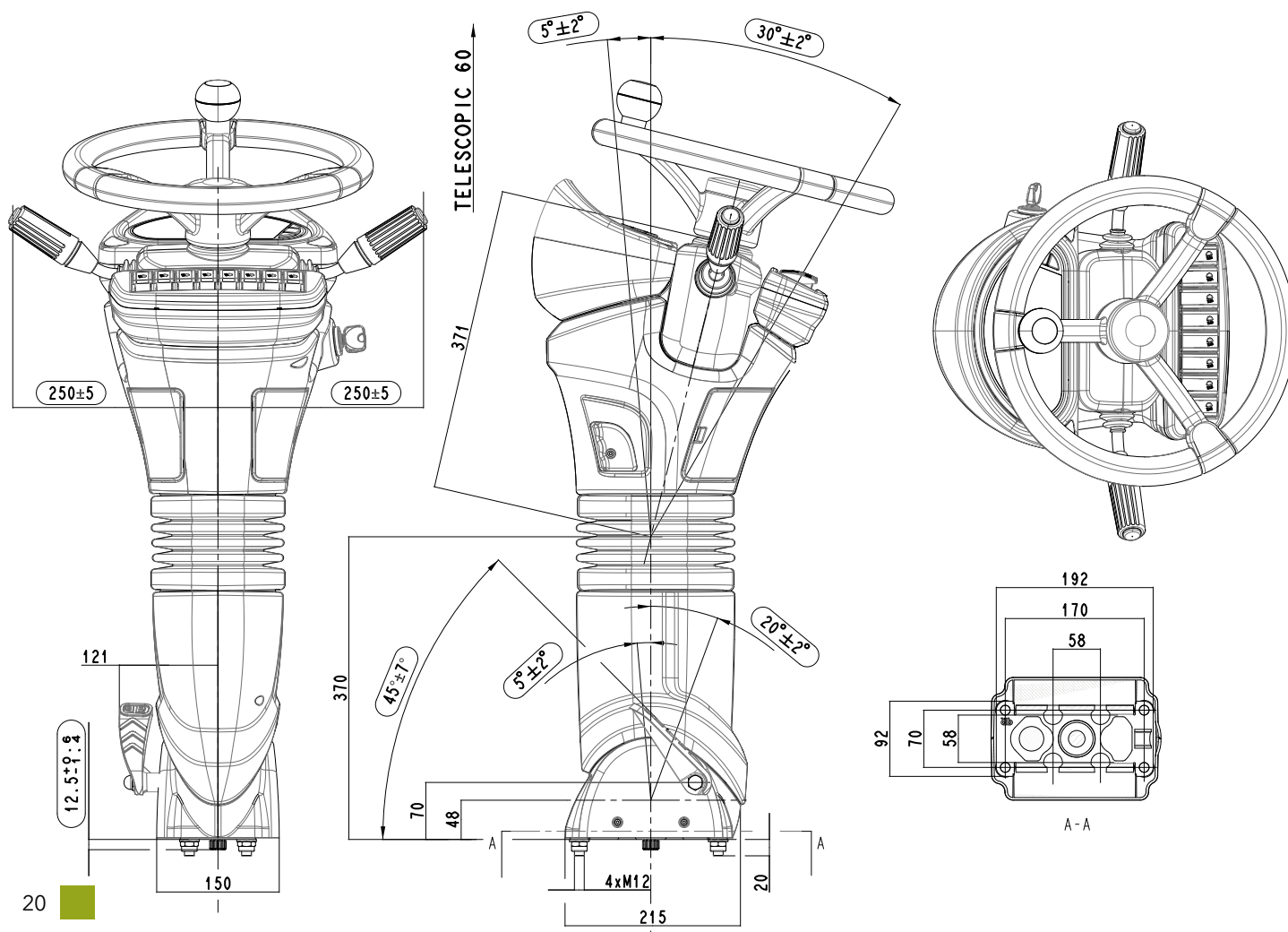
Lower pivot located at the base of the column, operated by a dedicated pedal on left side (5° toward windshield and 20° toward operator)

Both tilt adjustment are gas strut assisted

## TELESCOPIC ADJUSTMENT

Located onto upper section (60 mm)

Operated by push lever on left side





# CL5000 J Short

BCH

metal pillar



tilt



60 mm

■ RAL 9005 ■ RAL 7015

## STANDARD FEATURES

Injection plastic covers: RAL9005 or RAL7015

Accommodation for ignition switch

Accommodation for J-Cluster or Nimbus (page 30)

Panel with 8 rocker switches

Accommodation stalk switches on LH and/or RH side

Steering wheel (pages 26, 27, 28, 29)

Wiring harness (standard or customized)

## SINGLE TILT ADJUSTMENT

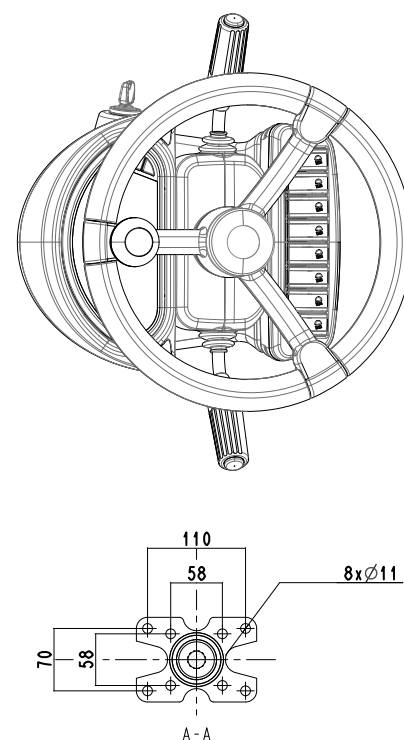
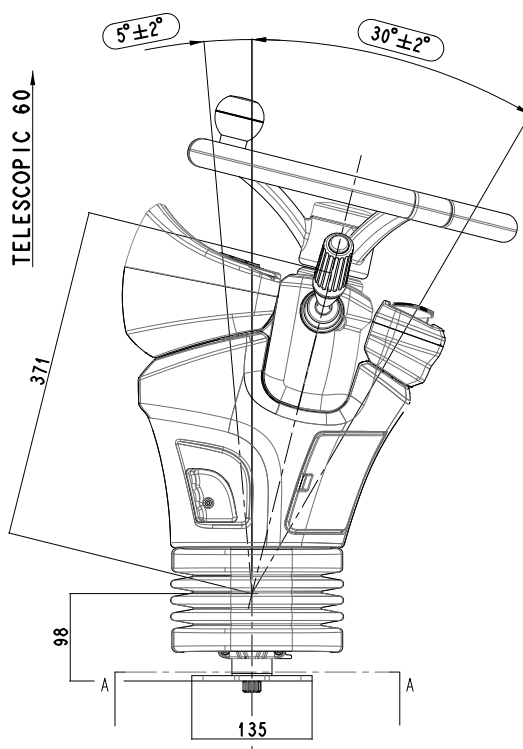
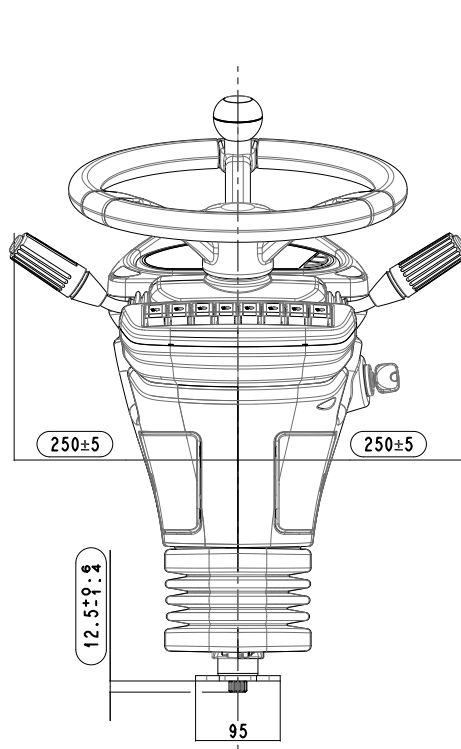
Operated by push lever on left side (5° toward wind-shield 30° toward operator)

Tilt adjustment are gas strut assisted

## TELESCOPIC ADJUSTMENT

Located onto upper section (60 mm)

Operated by push lever on left side



# CL6000

**MOXI  
10**

metal pillar



tilt



100 mm


**RAL 9005**
**RAL 7016**

## STANDARD FEATURES

Injection plastic covers: RAL9005 or RAL7016

Accommodation for ignition switch

Panel with 4 rocker switches or 2 KeyCan module or Smartview cluster (page 31)

Accommodation stalk switches on LH and/or RH side

Option steering wheel (pages 26, 27, 28)

Wiring harness (standard or customized)

## SINGLE TILT ADJUSTMENT

Upper pivot operated by 1° step of pedal on bottom side (5° toward windshield and 30° toward operator)

Tilt adjustment is gas strut assisted

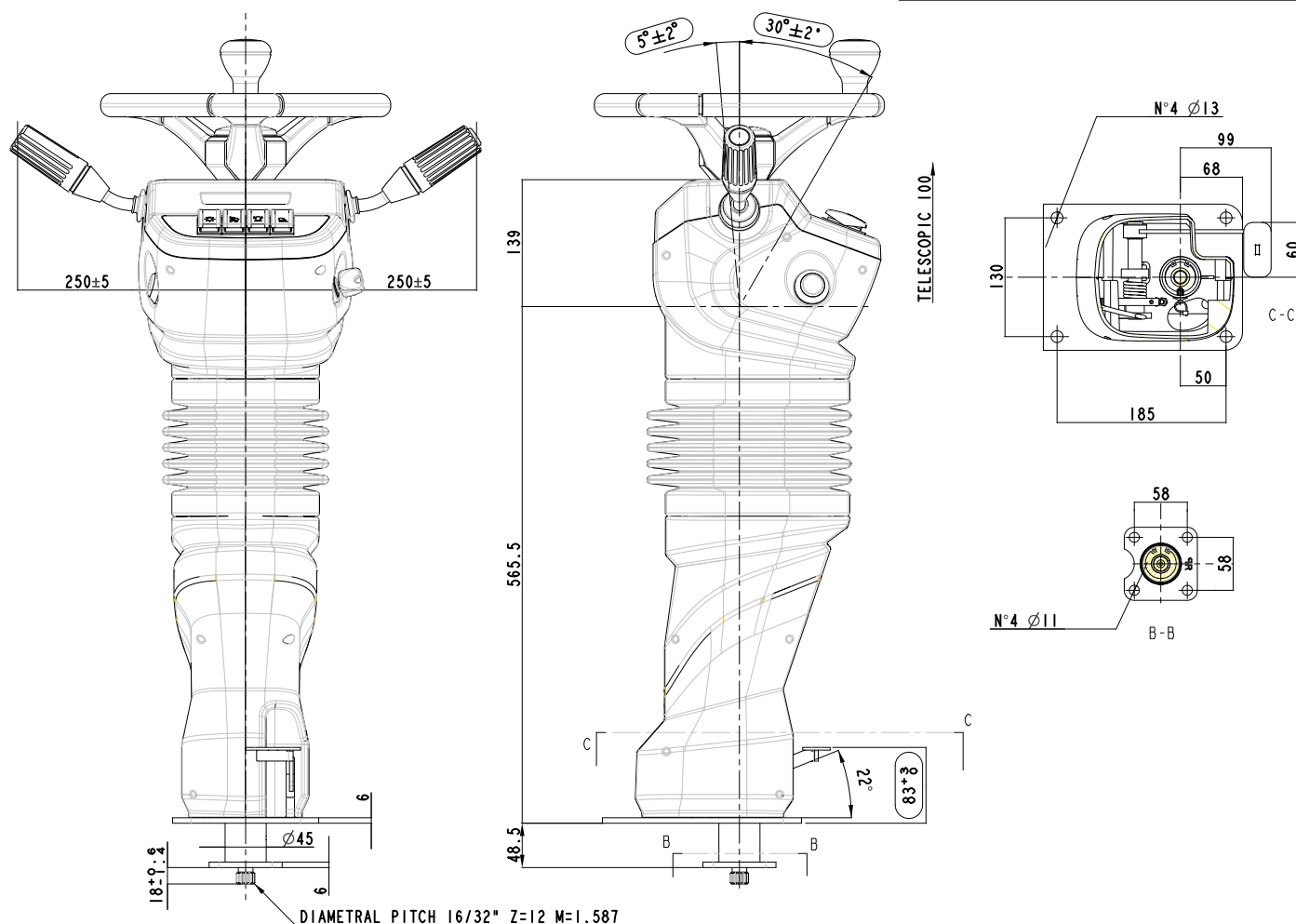
## TELESCOPIC ADJUSTMENT

Located onto upper section (100 mm)

Operated by 2° step of pedal on bottom side

## CLUSTER OPTION

On all the serie CL 6000 is possible to have it with different kind of clusters: D100TFT or NIMBUS (see images page 21)



# CL6000 Short

**MOXI  
10**

metal pillar



tilt



100 mm



**With D100TFT  
Cluster Option  
(pag. 30)**



**With NIMBUS  
Cluster Option  
(pag. 30)**

**RAL 9005**
**RAL 7016**

## STANDARD FEATURES

Injection plastic covers: RAL9005 or RAL7016

Accommodation for ignition switch

Panel with 4 rocker switches or 2 KeyCan module or Smartview cluster (page 31)

Accommodation stalk switches on LH and/or RH side

Option steering wheel (pages 26, 27, 28)

Wiring harness (standard or customized)

## SINGLE TILT ADJUSTMENT

Operated by 1° step handle lever on left side (5° toward windshield and 30° toward operator)

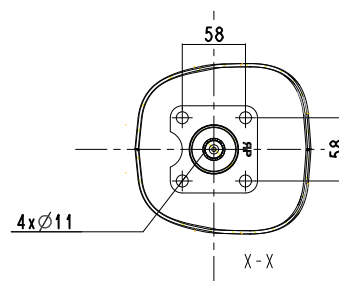
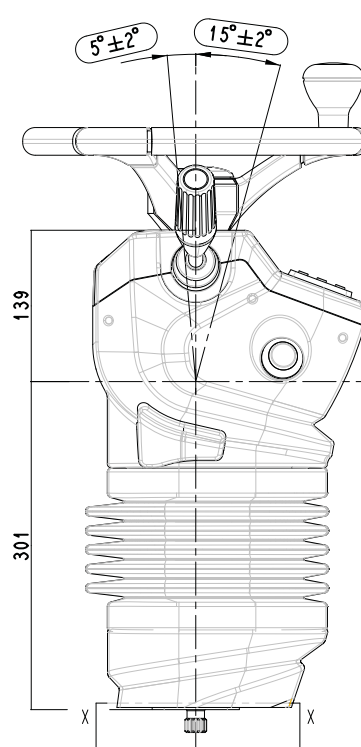
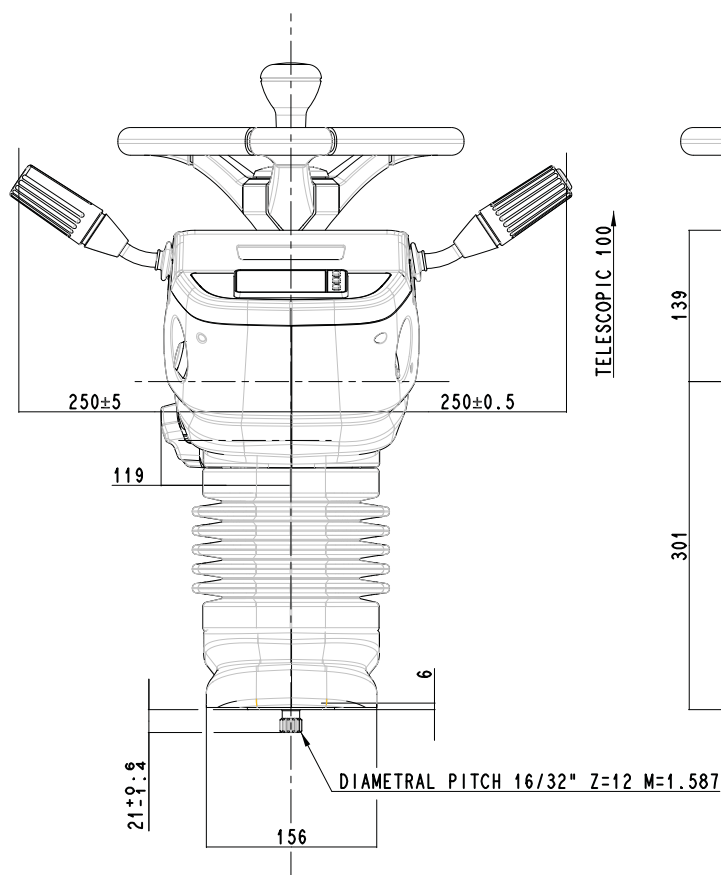
## TELESCOPIC ADJUSTMENT

Located onto upper section (100 mm)

Operated by 2° step handle lever on left side

## CLUSTER OPTION

On all the serie CL 6000 is possible to have it (see images on the side)



# CL7000

BCH

metal pillar



tilt



60 mm



RAL 9005

RAL 7016

## STANDARD FEATURES

Injection plastic covers: RAL9005 or RAL7016

Accommodation for ignition switch

Accommodation for Smart View Cluster with 2,4" display (page 31)

Panel with 7 rocker switches

Accommodation stalk switches on LH and/or RH side

Option steering wheel (pages 26, 27, 28)

Wiring harness (standard or customized)

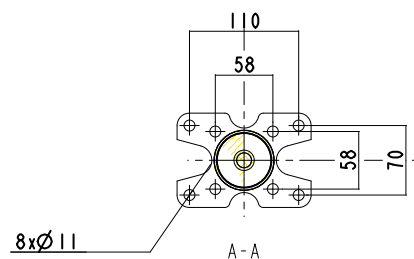
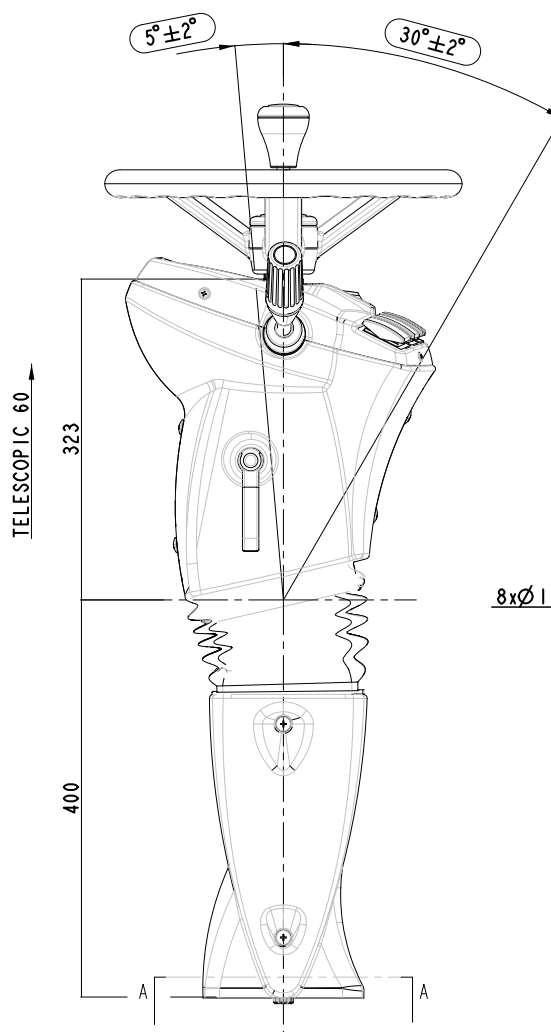
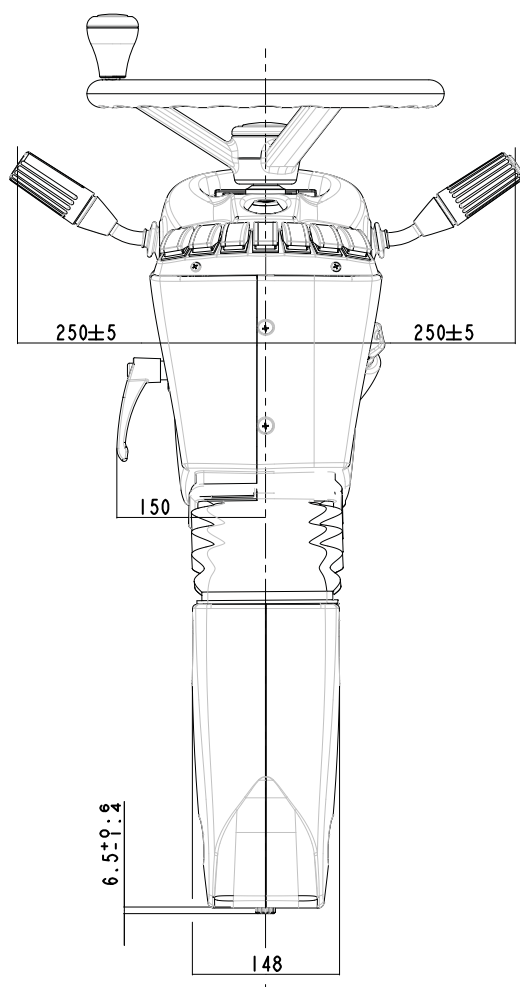
## SINGLE TILT ADJUSTMENT

Operated by handle lever on left side (5° toward wind-shield 30° toward operator)

## TELESCOPIC ADJUSTMENT

Located onto upper section (60 mm)

Operated by handle lever on left side



# CL7000 Short

BCH

metal pillar



tilt



60 mm



RAL 9005

RAL 7016

## STANDARD FEATURES

Injection plastic covers: RAL9005 or RAL7016

Accommodation for ignition switch

Accommodation for Smart View Cluster with 2,4" display (page 31)

Panel with 7 rocker switches

Accommodation stalk switches on LH and/or RH side

Option steering wheel (pages 26, 27, 28)

Wiring harness (standard or customized)

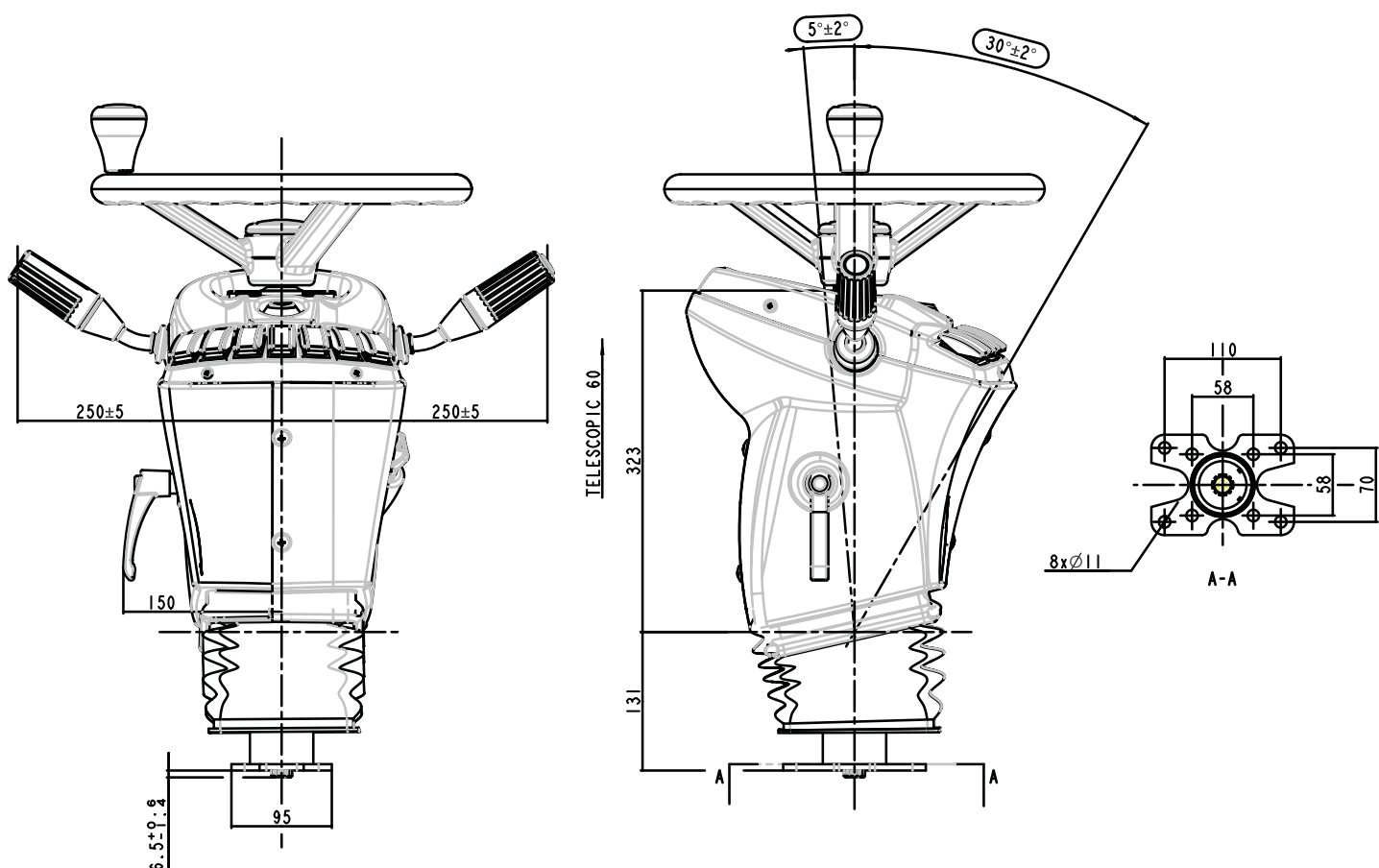
## SINGLE TILT ADJUSTMENT

Operated by handle lever on left side (5° toward wind-shield 30° toward operator)

## TELESCOPIC ADJUSTMENT

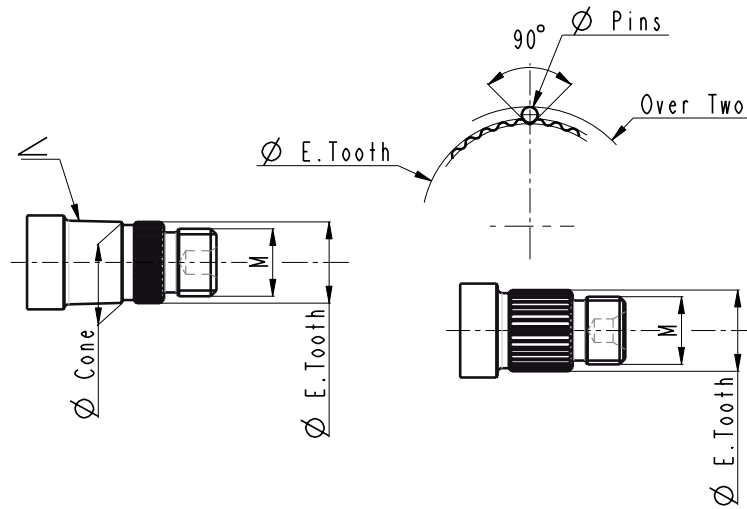
Located onto upper section (60 mm)

Operated by handle lever on left side





# Standard cone



## PERTEX STANDARD CONE: TOOTH Z=

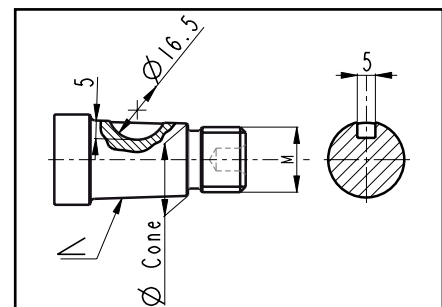
CONE NUMBER	THREAD M	CONE TOPER	< CONE	$\varnothing$ CONE	$\varnothing$ E. TOOTH	TOOTH	$\varnothing$ PINS	OVER TWO
3	M=18x1.5	1:16	1°47'23"	21.0	20.5	36	1.35	22.16
4	M=18x1.5	1:19.26	1°29'14"	21.55	21.7	36	1.587	24.12
5	M=18x1.5	1:19.26	1°29'14"	21.84	21.7	36	1.587	24.12
20	M=16x1.5	1:12	2°23'10"	17.9	17.4	40	1.320	19.48
24	M=16x1.5	1.46:20	2°5'25"	18.16	17.5	36	1.35	19.35
29	M=14x1.5	1:4.15	6°52'03"	16.5	15.8	36	1.320	17.72
35	M=16x1.5	1:3.43	8°17'37"	19.4	19.0	48	0.96	20.1

## PERTEX WHEEL ATTACK: TOOTH Z=

CONE NUMBER	THREAD M	CONE TOPER	< CONE	$\varnothing$ CONE	$\varnothing$ E. TOOTH	TOOTH	$\varnothing$ PINS	OVER TWO
18	M=16x2	-	-	-	19.6	38	0.96	20.43
28	M=18x1.5	-	-	-	23.95	24	2.25	26.65
32	M=18x1.5	-	-	-	21.7	36	1.587	24.12

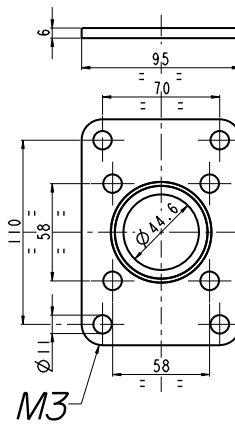
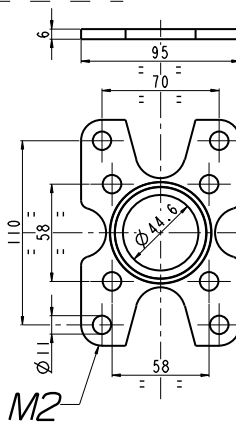
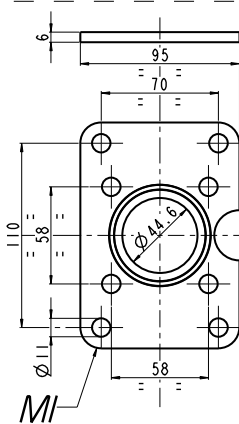
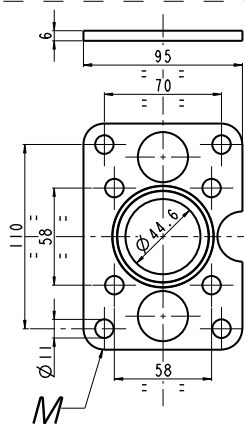
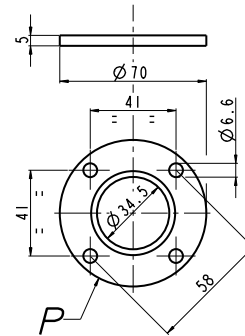
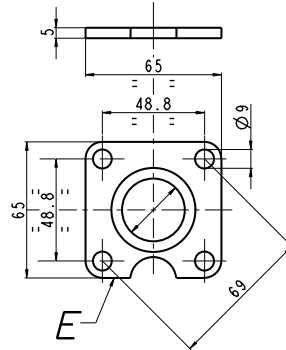
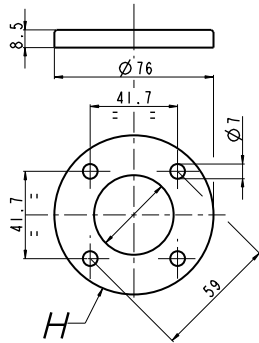
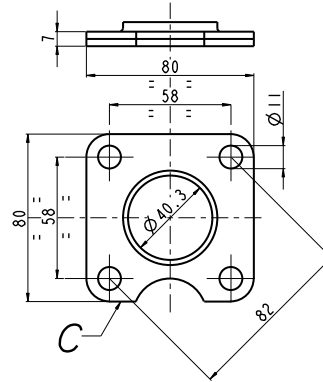
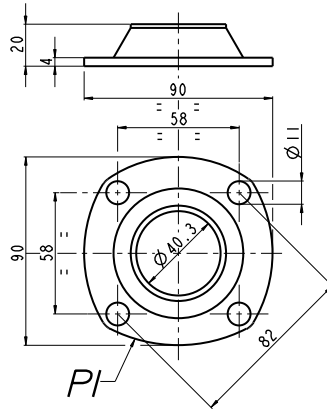
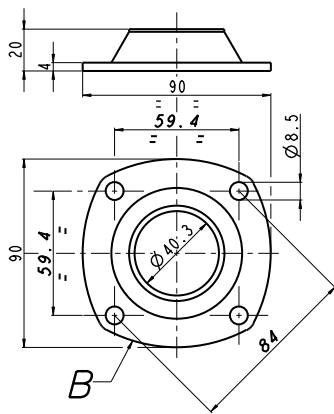
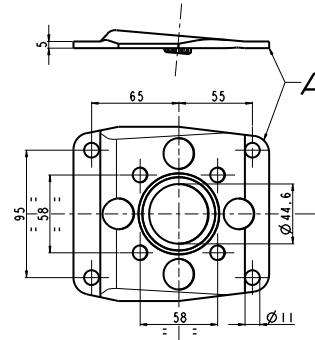
## PERTEX STANDARD CONE: WOODRUFF 5X6.5

CONE NUMBER	THREAD M	CONE TOPER	< CONE	$\varnothing$ CONE
1	M=18x1.5	1:20	1°25'55"	23.2
2	M=18x1.5	1:20	1°25'55"	20.53
6	M=16x1.5	1:8	3°34'34"	18.6
7	M=16x1.5	1:7.5	3°48'50"	18.2
21	M=18x1.5	1:16	1°47'23"	20.0

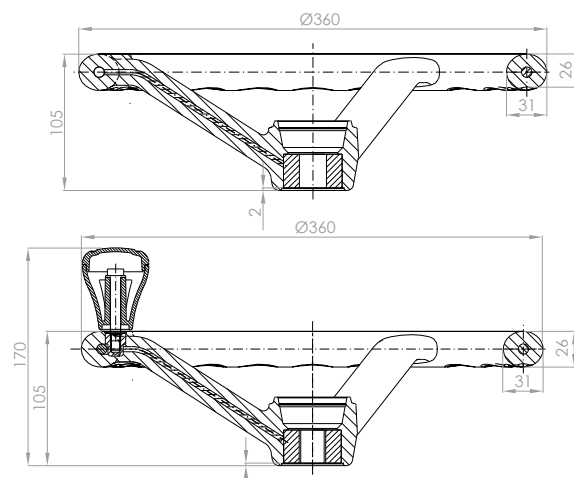
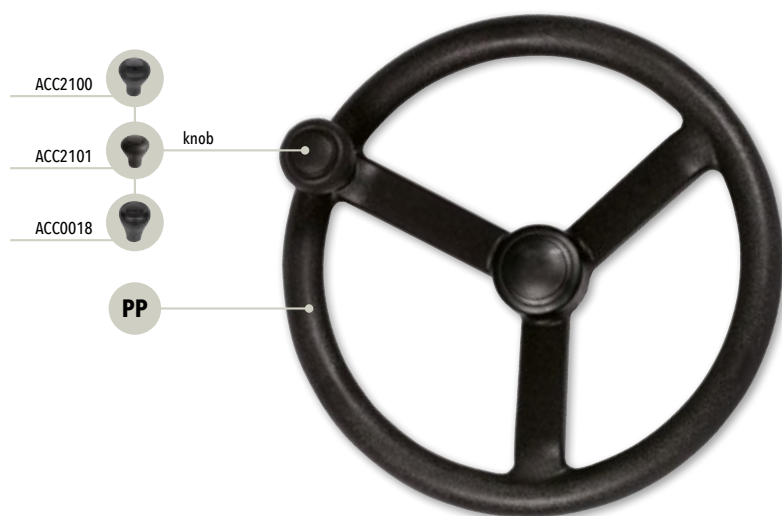


# Standard flange

Options flanged available

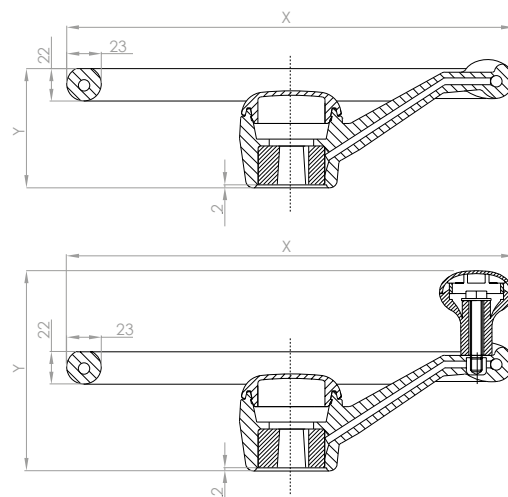


# SERIE 6 Polypropylene



Part Number	A	B	C	D	Teeth	Taper	E	F	G	H
<b>VOL1636C2</b>	45	26	/	/	/	1:7,5	19,20	/	11,65	5
<b>VOL1636C5</b>	45	26	/	/	/	1:7,5	21,60	/	12,30	5
<b>VOL1636DA</b>	45	26	/	/	/	1:20	24,80	/	15,40	5
<b>VOL1636D4</b>	45	26	13	20,78	36	1:19,26	23,02	22,04	/	/
<b>VOL163618</b>	45	26	/	18,30	36	/	/	19,80	/	/

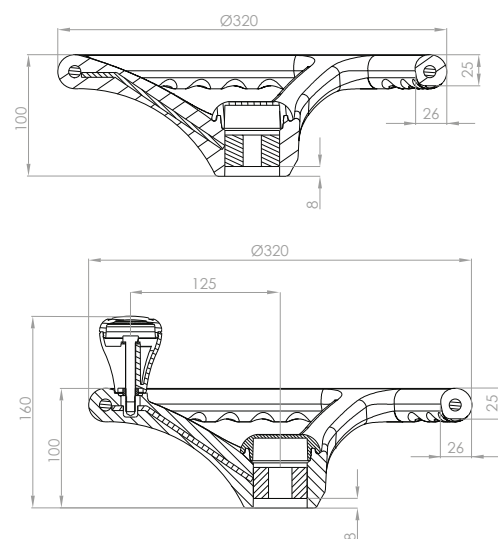
# SERIE 9 Polypropylene



Codice Part Number	X	Y	A	B	C	D	Denti Teeth	Cono Taper	E	F	G	H
<b>VOL1930C2</b>	300	81	45	26	/	/	/	1:7,5	19,20	/	11,65	5
<b>VOL1930C2P</b>	300	131	45	26	/	/	/	1:7,5	19,20	/	11,65	5
<b>VOL1930DA</b>	300	81	45	26	/	/	/	1:20	24,80	/	15,40	5
<b>VOL1936C2</b>	360	100	45	26	/	/	/	1:7,5	19,20	/	11,65	5
<b>VOL1936C5</b>	360	100	45	26	/	/	/	1:7,5	21,60	/	12,30	5
<b>VOL1936DA</b>	360	100	45	26	/	/	/	1:20	24,80	/	15,40	5
<b>VOL1936DAP</b>	360	150	45	26	/	/	/	1:20	24,80	/	15,40	5
<b>VOL193680</b>	360	130	45	26	16	16,60	40	1:12	18,86	17,82	/	/

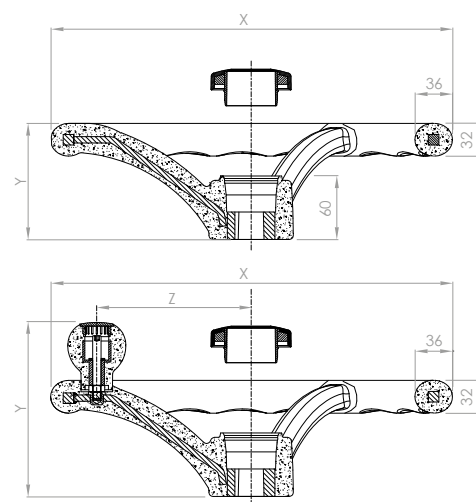
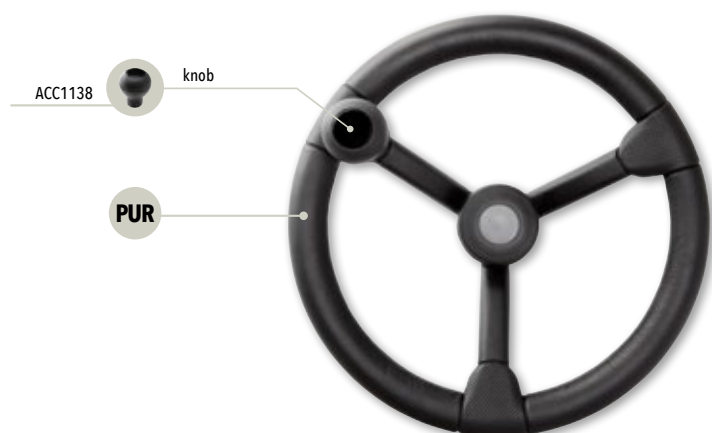


# SERIE 10 Polypropylene



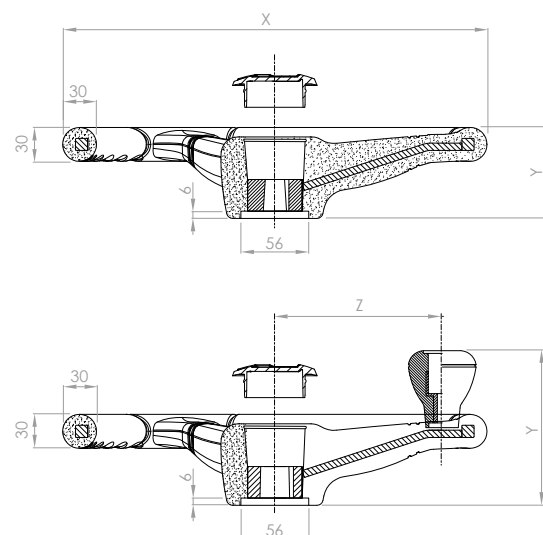
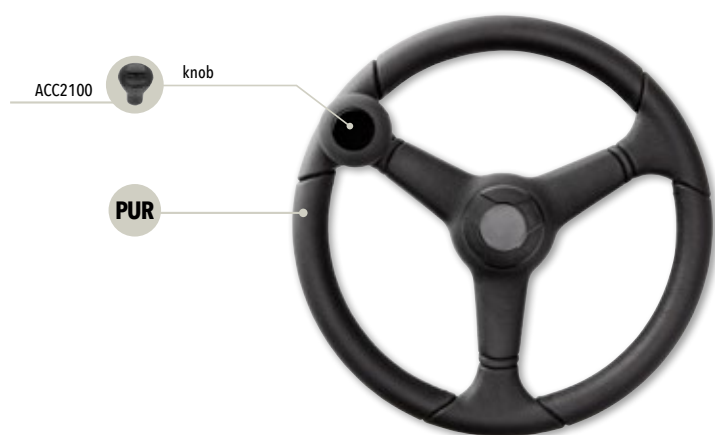
Codice Part Number	A	B	C	D	Denti Teeth	Cono Taper	E	F	G	H
<b>VOL1032C2</b>	45	26	/	/	/	1:7,5	19,20	/	11,65	5
<b>VOL1032DA</b>	45	26	/	/	/	1:20	24,80	/	15,40	5
<b>VOL1032D4</b>	45	26	13	20,78	36	1:19,26	23,02	22,04	/	/
<b>VOL1032ET</b>	45	26	18	16,627	40	1:12	18,86	17,826	/	/
<b>VOL1032ET2</b>	45	26	/	/	/	1:7,6	19,64	/	12,40	5
<b>VOL1032MI</b>	45	26	/	/	/	1:20	17,40	/	12	5

# SERIE 11 Polyurethane



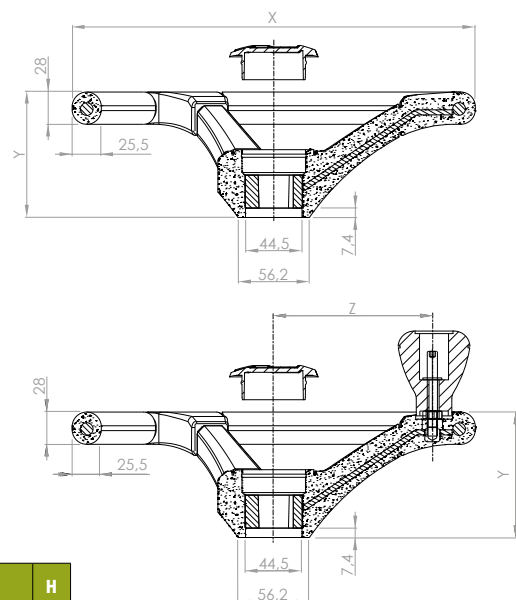
Part Number	X	Y	Z	A	B	C	D	Teeth	Taper	E	F	G	H
<b>VOL11138DA</b>	380	110	/	45	26	/	/	/	1:20	23,20	/	15,40	5
<b>VOL11138DAP</b>	380	165	143	45	26	/	/	/	1:20	23,20	/	15,40	5
<b>VOL11138D4</b>	380	110	/	45	26	13	20,78	36	1:19,26	21,50	22,04	/	/
<b>VOL11138D4P</b>	380	165	143	45	26	13	20,78	36	1:19,26	21,50	22,04	/	/
<b>VOL11138T3</b>	380	110	/	45	26	14,50	19,38	36	1:16	20,95	20,68	/	/
<b>VOL11138T3P</b>	380	165	143	45	26	14,50	19,38	36	1:16	20,95	20,68	/	/
<b>VOL11138AU</b>	380	110	/	45	26	/	/	/	1:20	20,53	/	14,30	5
<b>VOL11138AUP</b>	380	165	143	45	26	/	/	/	1:20	20,53	/	14,30	5
<b>VOL111405DA</b>	405	125	/	45	26	/	/	/	1:20	23,20	/	15,40	5
<b>VOL111405DAP</b>	405	182	161	45	26	/	/	/	1:20	23,20	/	15,40	5
<b>VOL111405D4</b>	405	125	/	45	26	13	20,78	36	1:19,26	21,50	22,04	/	/
<b>VOL111405D4P</b>	405	182	161	45	26	13	20,78	36	1:19,26	21,50	22,04	/	/
<b>VOL111405T3</b>	405	125	/	45	26	14,50	19,38	36	1:16	20,95	20,68	/	/
<b>VOL111405T3P</b>	405	182	161	45	26	14,50	19,38	36	1:16	20,95	20,68	/	/

# SERIE 12 Polyurethane



Part Number	X	Y	Z	A	B	C	D	Teeth	Taper	E	F	G	H
<b>VOL11235DA</b>	350	75	/	45	26	/	/	/	1:20	23,20	/	15,40	5
<b>VOL11235DAP</b>	350	128	138	45	26	/	/	/	1:20	23,20	/	15,40	5
<b>VOL11235D4</b>	350	75	/	45	26	13	20,78	36	1:19,26	21,50	22,04	/	/
<b>VOL11235D4P</b>	350	128	138	45	26	13	20,78	36	1:19,26	21,50	22,04	/	/
<b>VOL11235T3</b>	350	75	/	45	26	14,50	19,38	36	1:16	20,95	20,68	/	/
<b>VOL11235T3P</b>	350	128	138	45	26	14,50	19,38	36	1:16	20,95	20,68	/	/
<b>VOL11235C2</b>	350	75	/	45	26	/	/	/	1:7,9	15,90	/	11,65	5
<b>VOL11235C2P</b>	350	128	138	45	26	/	/	/	1:7,9	20,53	/	14,30	5

# SERIE 18 Polyurethane



PART NUMBER	X	Y	Z	A	B	C	D	TEETH	TAPER	E	F	G	H
<b>VOL1832AU</b>	320	100	/	45	26	/	/	/	1:20	23,20	/	15,40	5
<b>VOL1832DA</b>	320	100	/	45	26	/	/	/	1:20	23,20	/	15,40	5
<b>VOL1832DAP</b>	320	162	125	45	26	/	/	/	1:20	23,20	/	15,40	5
<b>VOL1832D4</b>	320	100	/	45	26	13	20,78	36	1:19,26	21,50	22,04	/	/
<b>VOL1832D4P</b>	320	162	125	45	26	13	20,78	36	1:19,26	21,50	22,04	/	/
<b>VOL1832C2</b>	320	100	/	45	26	/	/	/	1:7,9	15,90	/	11,65	5
<b>VOL1832C2P</b>	320	162	125	45	26	/	/	/	1:7,9	20,53	/	14,30	5
<b>VOL1835DAP</b>	350	166	137	45	26	/	/	/	1:20	23,20	/	15,40	5

# KNOB



PP

**ACC0018**  
Polypropylene knob



PUR

**ACC2100**  
Polyurethane knob



PUR

**ACC2101**  
Polyurethane knob



PUR

**ACC1138**  
Polyurethane knob

# CLUSTER

## J-CLUSTER



Combines the features of traditional pointer indicators with the performance and flexibility of LCD TFT color high resolution display. Specifically designed for harsh environmental application, J-Cluster is the right instrument for machinery with and without cabin.

## NIMBUS



Cluster in solid state solution, with display 5" TFT color 800 cd (IPS technology) and 7 led indicators. Powerfull microcontroller and large memory size: 32bit, 8 Mb Flash and 8 Mb Ram.

## D100TFT



D100TFT is equipped with display 2,4" TFT color high-brightness in IPS technology, canbus line SAE J1939 and several inputs and outputs that allow to manage optional functions.

# DISPLAY

## SMARTVIEW



SMARTVIEW is an ultra-compact instrument equipped with a TFT color display 2,4", 5 LED indicators and 3 pushbuttons. Suitable for applications where space is limited, it is able to manage and display all the information on the machine. Able to connect both via CANBUS and with "traditional" signals, it is the right compromise between cost-effectiveness and high performance.

## SLIMITAN



Is presented as the new line of instruments designed for applications where minimum space and maximum flexibility are required, combined with high visual performance and structural robustness. With a minimal design, SLIMITAN fits perfectly into any type of dashboard. Equipped with a capacitive touchscreen managed by an intelligent algorithm, they ensure excellent optical performance as well as the possibility of using the touch function even while wearing protective gloves.

## STEERING VIEW



Is an innovative steering wheel in which there is a multifunction dashboard with a high-brightness display in 7" wide screen TFT LCD technology and 800x480 resolution. Steering View meets the needs of those who need maximum visibility in the cab by giving the possibility to manage and view all the parameters of the machine. The instrument in the center of the steering wheel has the peculiarity of remaining fixed, thus allowing maximum ergonomics and functionality.

# KEYCAN

## KEYCAN



Is a new concept of modular keypad that allows you to customize the design of the dashboard according to your needs. The 4 pushbuttons that make up the keyboard are easily customizable. Each of them is equipped with 3 RGB LEDs that indicate its status and allow you to adjust the intensity of the 7 different possible colors. The keys also have a seat to accommodate a plastic plate on which the desired symbol is lasered. KeyCAN is programmable via CANBUS and equipped with the J1939 stack. The keyCAN can be mounted horizontally or vertically thanks to the possibility of freely positioning the keys.









**IMEL Division**

Via Repubblica, 7 - 41011 Campogalliano, MO (Italy)  
Tel. +39 0522 636911 - Fax. +39 0522 695753  
**www.ama.it** - ama@ama.it

**AMA S.p.A.  
Accessori Macchine Agricole**

Via Giacomo Puccini, 28 - 42018 San Martino in Rio (RE) Italy  
Tel. +39 0522 636911 - Fax +39 0522 695753  
**www.ama.it** - ama@ama.it